

WJEC Biology GCSE

SP4.3: Dissection of a Mammalian Kidney Practical Notes



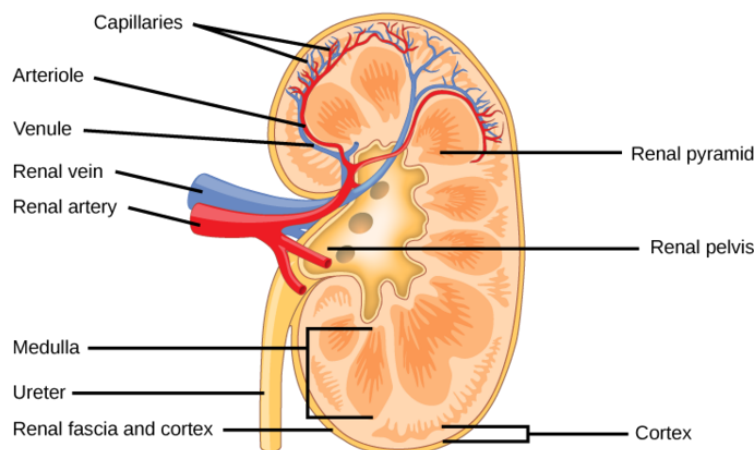
Dissection of a Mammalian Kidney

Equipment

- Sheep/pig/cow kidney
- Scalpel
- Dissection board
- Newspaper
- Disposable gloves
- Goggles

Procedure

1. Set your workspace up: place your dissection board on top of the newspaper.
2. Before beginning the dissection, note the external structures of the kidney, which includes:
 - a. Ureter
 - b. Renal artery
 - c. Renal vein
3. Draw a diagram of the kidney with these structures before you dissect.
4. Placing the kidney flat on the bench, use the scalpel to cut the kidney lengthways from the side to obtain a cross section.
5. Identify the cortex, medulla, and renal pelvis as shown in the diagram below.
6. Draw a labelled diagram of the kidney, labeling the structures above.



[Medical LibreTexts](#), [CC BY-NC-SA 3.0 US](#)



Potential hazards

Animal tissue is a potential biohazard - make sure gloves are worn and wounds/cuts are covered. Be careful with the sharp scalpel - always direct your cuts downwards - towards the dissecting board.

