

1. Glaucoma is an eye condition caused by increased pressure within the eye.

Which of the options, A to D, is a correct explanation for the increased pressure?

A decreased production of aqueous humour

B increased production of vitreous humour

C poor drainage of aqueous humour

D poor drainage of vitreous humour

Your answer

[1]

2. The brain tissue of a person who has Alzheimer's disease is shown to contain neurofibrillary tangles. These are shown in the micrograph in Fig. 26.1.

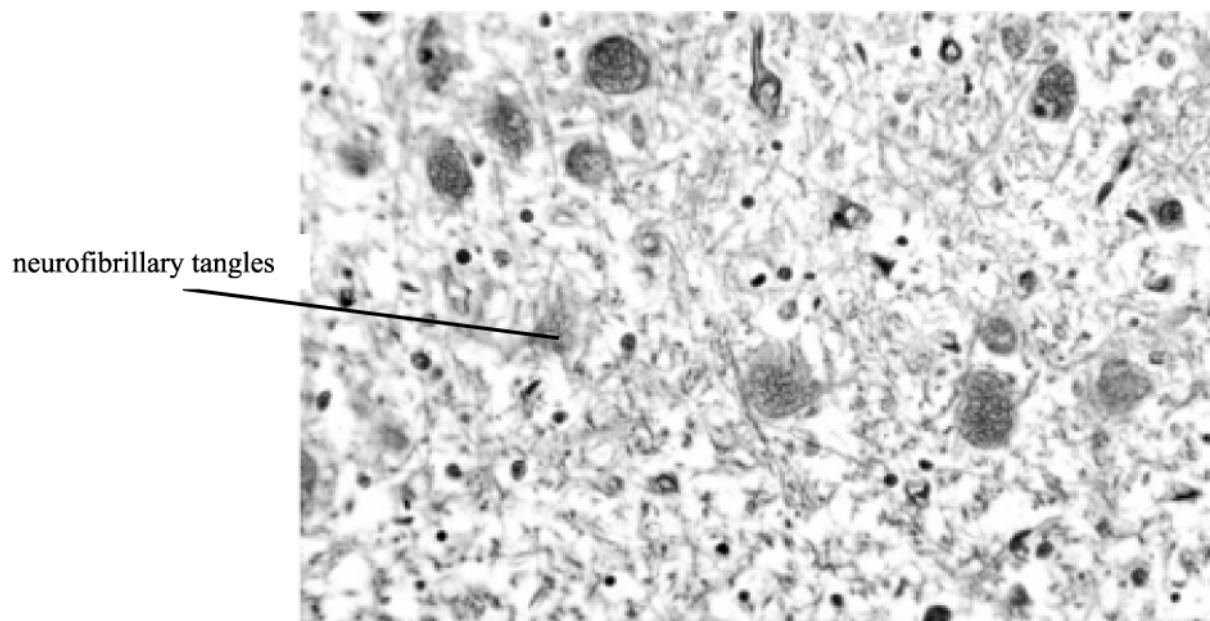


Fig. 26.1

Which of the following statements are true?

Statement 1: Neurofibrillary tangles contain β -amyloid protein.

Statement 2: Neurofibrillary tangles contain Tau protein.

Statement 3: Neurofibrillary tangles are caused by an accumulation of twisted protein fragments inside the neurones.

- A 1, 2 and 3
- B Only 1 and 2
- C Only 2 and 3
- D Only 1

Your answer

[1]

3. As people age, damage to the peripheral nerves associated with the eye may result in poor vision due to specific eye conditions, such as age-related macular degeneration (AMD).

Which of the following could lead to the development of AMD?

- A a poor diet lacking in vitamins
- B increased pressure in the eye
- C hardening of the arteries that supply oxygen
- D damage to the optic nerve

Your answer

[1]

END OF QUESTION PAPER

Question			Answer/Indicative content	Marks	Guidance
1			C	1	
			Total	1	
2			C	1	
			Total	1	
3			C	1	
			Total	1	