

1. Fig. 29.1 is a diagram of a section through the flower of the bean plant, *Vicia fabia*.

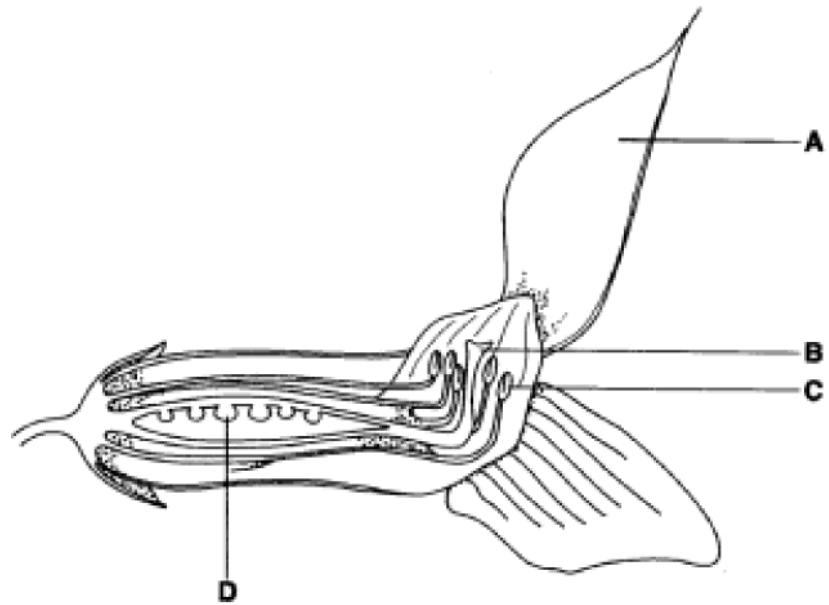


Fig. 29.1

Which of the letters on the diagram indicate sites where meiosis occurs?

- A A and B
- B B and C
- C B and D
- D C and D

Your answer

[1]

2.

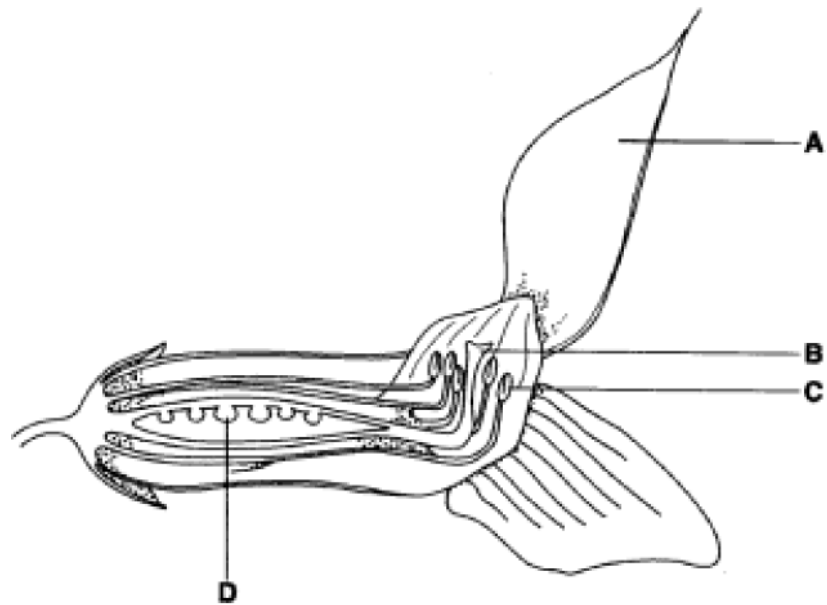


Fig. 29.1

Which of the following is likely to be correct about the flowers of *Vicia fabia*?

- A The flowers have a nectary and are wind pollinated
- B The flowers have a nectary and are insect pollinated
- C The flowers are scented and are wind pollinated
- D The flowers are unscented and are insect pollinated

Your answer

[1]

3. Germination is the process in which a seed begins to grow into a plant.

Which of the statements, A to D, is an early event in germination?

- A glucose in the endosperm is polymerised into starch
- B glucose in the embryo is polymerised into starch
- C starch in the endosperm is broken down into glucose
- D starch in the embryo is broken down into glucose

Your answer

[1]

4. Which of the options, A to D, would promote flowering in a short-day plant?

- A longer exposure to cold temperatures
- B longer exposure to darkness
- C shorter exposure to cold temperatures
- D shorter exposure to darkness

Your answer

[1]

5. Fertilisation in a flowering plant involves two pollen nuclei.

The first nucleus fuses with the ovule and the second nucleus fuses with the polar nuclei.

Which of the options, A to D, is the seed structure formed after fusion of the second nucleus with the polar nuclei?

- A aleurone layer
- B embryo
- C endosperm
- D seed coat

Your answer

[1]

END OF QUESTION PAPER

Mark Scheme

Question			Answer/Indicative content	Marks	Guidance
1			D	1	
			Total	1	
2			B	1	
			Total	1	
3			C	1	
			Total	1	
4			B	1	
			Total	1	
5			C ✓	1	Examiner's Comments This question was straightforward recall and the majority of candidates chose the correct response.
			Total	1	