

Write your name here

Surname

Other names

Pearson Edexcel
Level 3 GCE

Centre Number

--	--	--	--	--

Candidate Number

--	--	--	--

Biology A (Salters Nuffield)

Advanced Subsidiary

Paper 2: Development, Plants and the Environment

Tuesday 6 June 2017 – Afternoon

Time: 1 hour 30 minutes

Paper Reference

8BN0/02

You must have:

Calculator, HB pencil, ruler

Total Marks

Instructions

- Use **black** ink or ball-point pen.
- **Fill in the boxes** at the top of this page with your name, centre number and candidate number.
- Answer **all** questions.
- Show your working in any calculation questions and include units in your answer where appropriate.
- Answer the questions in the spaces provided
– *there may be more space than you need.*
- You may use a scientific calculator.
- In questions marked with an **asterisk (*)**, marks will be awarded for your ability to structure your answer logically, showing how the points that you make are related or follow on from each other where appropriate.

Information

- The total mark for this paper is 80.
- The marks for **each** question are shown in brackets
– *use this as a guide as to how much time to spend on each question.*

Advice

- Read each question carefully before you start to answer it.
- Try to answer every question.
- Check your answers if you have time at the end.

Turn over ►

P49855A

©2017 Pearson Education Ltd.

2/2/1/1/



Pearson

Answer ALL questions.

Write your answers in the spaces provided.

Some questions must be answered with a cross in a box ☒. If you change your mind about an answer, put a line through the box ~~☒~~ and then mark your new answer with a cross ☒.

1 Plant cell walls contain cellulose. Cellulose molecules are polymers.

(a) (i) Name the monomer that makes up cellulose.

(1)

(ii) Which of the following correctly describes how these monomers are held together in a cellulose molecule?

(1)

- A** by glycosidic bonds in a branched chain
- B** by glycosidic bonds in an unbranched chain
- C** by hydrogen bonds in a branched chain
- D** by hydrogen bonds in an unbranched chain

(iii) Cellulose molecules are held together in bundles called microfibrils.

These microfibrils are embedded in a matrix containing calcium pectate.

Calcium pectate can be found in the

(1)

- A** amyloplast
- B** chloroplast
- C** middle lamella
- D** tonoplast

(b) (i) The cell walls in some plant tissues have secondary thickening. This may contain a substance called lignin.

Which of the following properties can lignin give to cell walls in plants?

(1)

- A** flexibility and permeability to water
- B** flexibility and waterproofing
- C** strength and permeability to water
- D** strength and waterproofing

DO NOT WRITE IN THIS AREA

DO NOT WRITE IN THIS AREA

DO NOT WRITE IN THIS AREA



2 Lupus is a genetic condition that has various symptoms.

There are several different genes involved in the development of the disease. The symptoms that develop vary depending on genetic and environmental factors.

Stress and exposure to chemicals in the environment can influence the development of lupus.

(a) (i) What is the term that refers to the pattern of inheritance where a single characteristic is determined by more than one gene? (1)

- A** epigenetic
- B** monogenic
- C** polygenic
- D** sex-linked

(ii) Which of the following is another environmental factor that could affect the development of lupus? (1)

- A** age
- B** diet
- C** gender
- D** height

DO NOT WRITE IN THIS AREA

DO NOT WRITE IN THIS AREA

DO NOT WRITE IN THIS AREA



3 Conservation programmes are used to save endangered species.

The Scottish wildcat, shown in the photograph, is a subspecies of the European wildcat, *Felis silvestris silvestris*.



The Cairngorms Wildcat Project estimates that there are 150 breeding pairs left, but the Scottish Wildcat Association believes that only 35 cats remain.

A conservation group proposed that a captive breeding programme, and the relocation of Scottish wildcats, would be necessary to prevent extinction.

(a) (i) State why the Scottish wildcat has been described as **endemic**.

(1)

.....

.....

.....

(ii) The Scottish wildcat can interbreed successfully with domestic cats.

Explain the effect this could have on the genetic diversity of the Scottish wildcat.

(2)

.....

.....

.....

.....

.....

.....

DO NOT WRITE IN THIS AREA

DO NOT WRITE IN THIS AREA

DO NOT WRITE IN THIS AREA

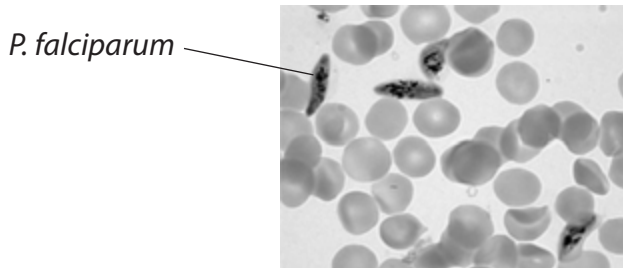


4 *Plasmodium falciparum* is a single-celled eukaryotic organism. *P. falciparum* causes the disease malaria when it invades red blood cells.

If untreated, malaria can result in a shorter than normal life span.

The high mortality rate of people with malaria has been claimed to be one of the greatest selection pressures on the human genome in recent history.

(a) The photograph shows *P. falciparum* in a sample of human blood.



Describe how scientists could have determined that *P. falciparum* is a eukaryotic organism and not a prokaryotic organism.

(4)

.....

.....

.....

.....

.....

.....

.....

.....

.....

.....

.....

.....

.....

.....

.....

.....

.....

.....

.....

.....

.....

.....

.....

DO NOT WRITE IN THIS AREA

DO NOT WRITE IN THIS AREA

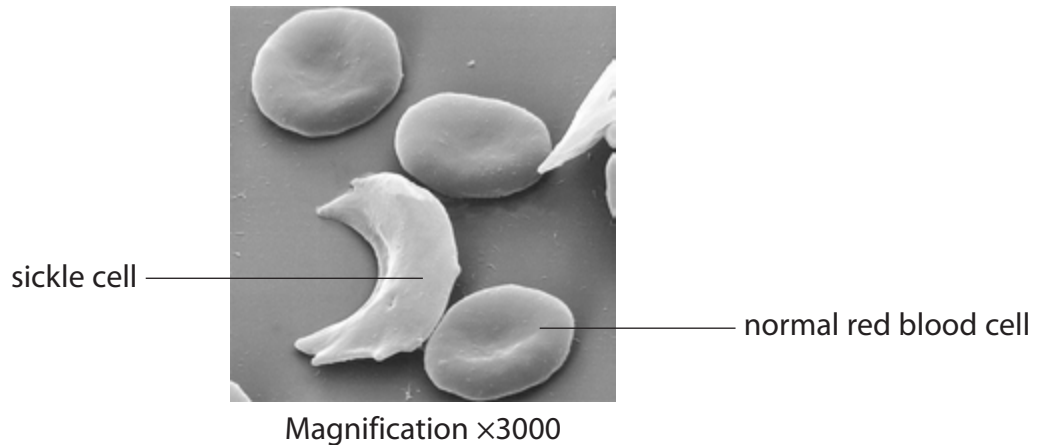
DO NOT WRITE IN THIS AREA



(b) Sickle cell anaemia is a genetic condition.

People who are homozygous for the sickle cell allele have red blood cells that become deformed in shape when they are deoxygenated.

The electron micrograph shows these deformed sickle cells alongside normal red blood cells.



(i) The image of the normal red blood cell labelled in the electron micrograph has a diameter of 2 μm .

Which of the following is the actual diameter of this red blood cell?

(1)

- A 0.67 μm
- B 6.7 μm
- C 67 μm
- D 670 μm



- (ii) People with a heterozygous genotype for this condition do not develop severe sickle cell anaemia.

The Yoruba are a group of people who live in West Africa.

In a population of 600 Yoruba individuals, 24 were found to have severe sickle cell anaemia.

Calculate the number of heterozygous individuals in this population.

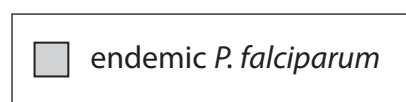
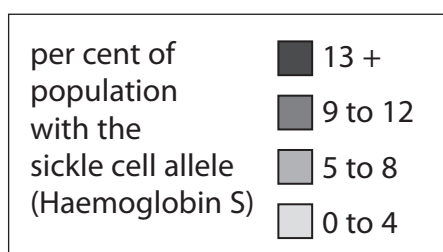
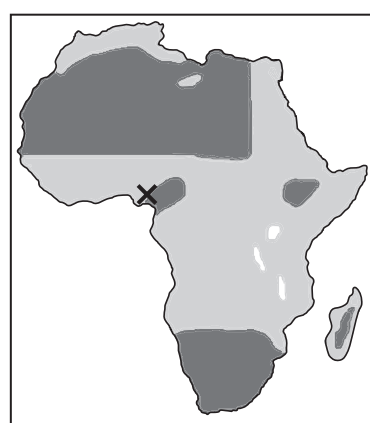
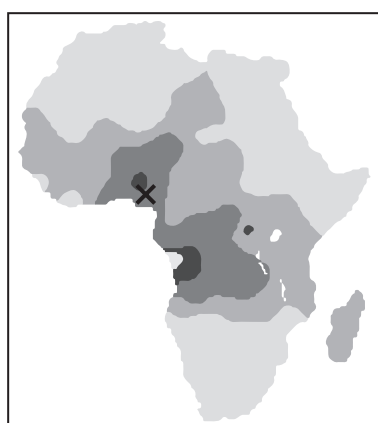
Use the Hardy Weinberg equation, $p^2 + 2pq + q^2 = 1$.

(3)

Answer.....

- *(iii) Individuals who are heterozygous for this condition are resistant to a severe form of malaria, called cerebral malaria, that affects the brain. Individuals who are homozygous for the sickle cell allele are more likely to develop severe sickle cell anaemia.

The maps show the percentage of the population with the allele for sickle cell anaemia and the distribution of *P. falciparum* in Africa. The location of the Yoruba people is indicated with a cross (X).



DO NOT WRITE IN THIS AREA

DO NOT WRITE IN THIS AREA

DO NOT WRITE IN THIS AREA

Analyse the data to explain how malaria has affected the percentage of individuals in the Yoruba population with the allele for sickle cell anaemia.

(6)

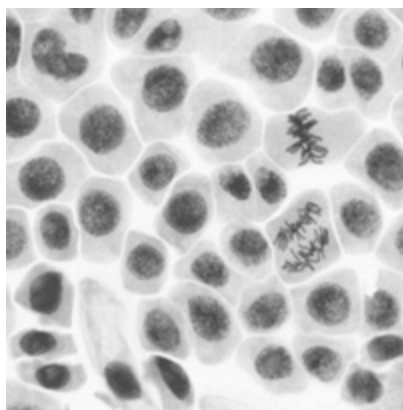
Area with horizontal dotted lines for writing the answer.

(Total for Question 4 = 14 marks)



5 Cell division can be affected by various chemicals. The effects of these chemicals can be studied by observing tissues.

(a) The photograph shows onion root cells undergoing mitosis.



(i) Draw a line labelled **M** to one cell at metaphase and a line labelled **A** to one cell at anaphase.

(2)

(ii) The rate at which cells are dividing can be determined by calculating the mitotic index.

The mitotic index is the percentage of cells in a sample undergoing mitosis.

The table shows the number of cells at different stages of the cell cycle in one sample.

Stage	Number of cells
Interphase	462
Prophase	23
Metaphase	24
Anaphase	4
Telophase	16

Calculate the mitotic index for the sample of cells shown in the table.

(2)

Answer %

DO NOT WRITE IN THIS AREA

DO NOT WRITE IN THIS AREA

DO NOT WRITE IN THIS AREA



- (b) Herbicides are chemicals used to kill weeds. Some herbicides work by disrupting the cell cycle.

An investigation was carried out to study the effect of different concentrations of the herbicide Agil on mitosis in onion root tips.

The roots of onions were exposed to different concentrations of Agil for 24 hours.

Root tip squashes were then prepared and the mean mitotic index was calculated for each Agil concentration.

The results are shown in the table.

Agil concentration / ppm	Mean mitotic index (% \pm SE)
0.0	40.7 \pm 0.22
0.5	33.7 \pm 0.32
1.0	31.1 \pm 0.15
1.5	30.8 \pm 0.19

- (i) Describe the effects of Agil concentration on mitosis in onion root tips.

(2)

.....

.....

.....

.....

.....

.....

.....

.....

.....

.....

.....

.....

.....

.....

.....

.....

.....

.....

.....

.....

.....

.....

DO NOT WRITE IN THIS AREA

DO NOT WRITE IN THIS AREA

DO NOT WRITE IN THIS AREA



(ii) Devise an investigation to determine the effect of exposure time to Agil on the rate of mitosis in onion root tips.

(6)

Area with horizontal dotted lines for writing the answer.

DO NOT WRITE IN THIS AREA

DO NOT WRITE IN THIS AREA

DO NOT WRITE IN THIS AREA



DO NOT WRITE IN THIS AREA

DO NOT WRITE IN THIS AREA

DO NOT WRITE IN THIS AREA

(c) Chemotherapy is used to treat cancer. Cancer involves uncontrolled cell division. Some chemotherapy treatments have an effect on mitosis.

Paclitaxel is a chemical used in chemotherapy to treat various types of cancer. It works by preventing the shortening of spindle fibres.

Explain how preventing the shortening of spindle fibres affects mitosis.

(2)

.....

.....

.....

.....

.....

.....

.....

.....

.....

.....

.....

.....

.....

.....

.....

.....

.....

.....

.....

.....

.....

.....

.....

(Total for Question 5 = 14 marks)



DO NOT WRITE IN THIS AREA

DO NOT WRITE IN THIS AREA

DO NOT WRITE IN THIS AREA

BLANK PAGE



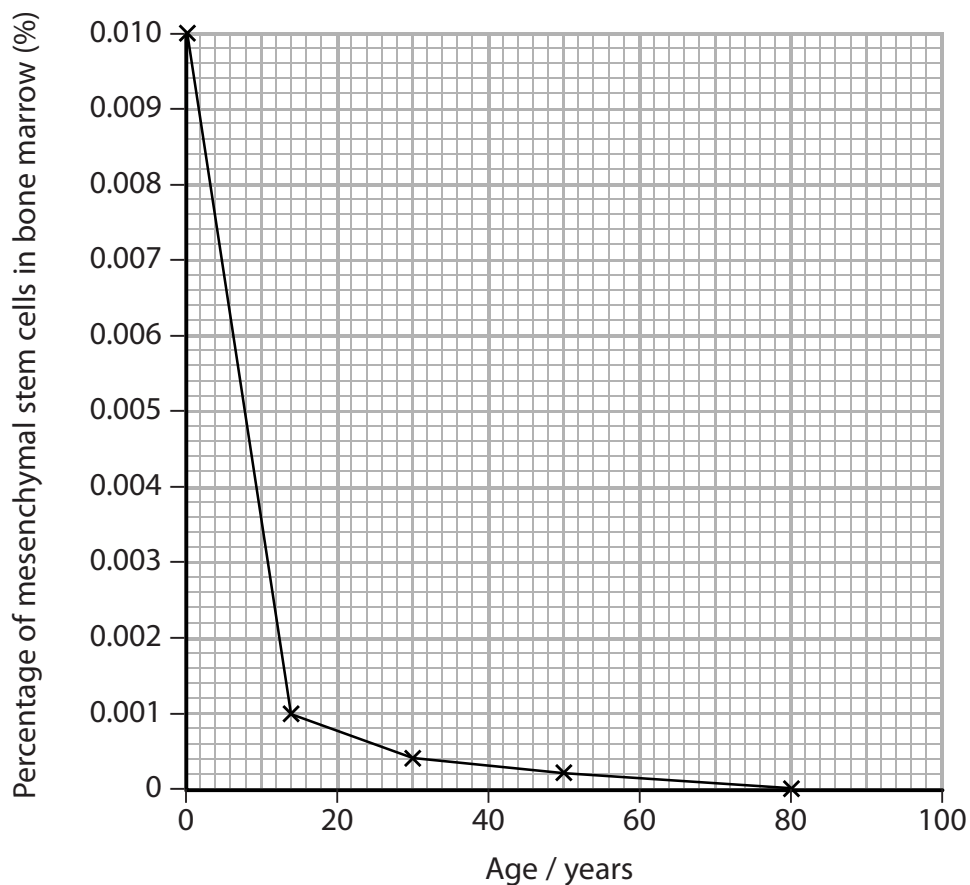
DO NOT WRITE IN THIS AREA

DO NOT WRITE IN THIS AREA

DO NOT WRITE IN THIS AREA

(b) The proportion of mesenchymal stem cells to other cells in the bone marrow changes with age.

The graph shows the relationship between age and the percentage of mesenchymal stem cells in bone marrow.



Calculate the rate at which the percentage of mesenchymal stem cells in the bone marrow changes between the ages of 14 and 30.

(2)

Answer % y^{-1}



DO NOT WRITE IN THIS AREA

DO NOT WRITE IN THIS AREA

DO NOT WRITE IN THIS AREA

(c) Deduce why age affects the time taken to recover from injuries.

(3)

Area with horizontal dotted lines for writing the answer.

(Total for Question 7 = 11 marks)



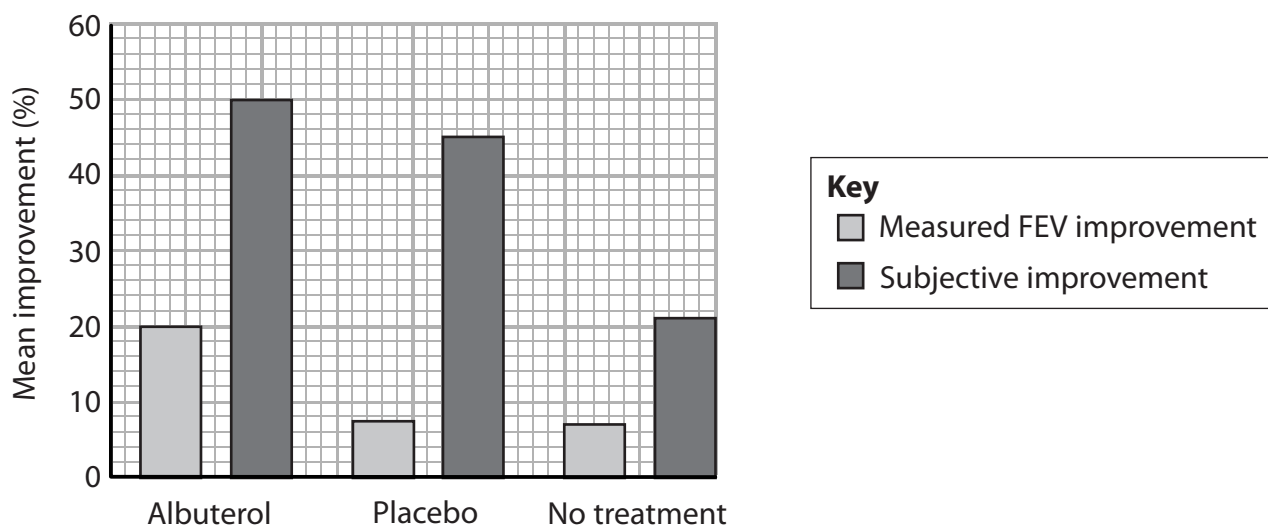
8 Medicinal drugs undergo clinical trials before they are licensed to be used.

(a) Albuterol is a drug used to reduce the symptoms of asthma.

In a clinical trial, people with asthma were given either Albuterol, a placebo or no treatment.

Measured improvement (FEV improvement) can be used to indicate the effectiveness of the treatment in reducing the symptoms of asthma. FEV is forced expiratory volume. Asthma reduces FEV.

The people in the trial were also asked to describe their improvement and this was recorded as 'subjective improvement'.



Comment on the measured improvement (FEV improvement) and subjective improvement for the different treatments.

(3)

.....

.....

.....

.....

.....

.....

.....

.....

.....

.....

.....

.....

.....

.....

.....

.....

.....

.....

.....

.....

.....

.....

.....



DO NOT WRITE IN THIS AREA

DO NOT WRITE IN THIS AREA

DO NOT WRITE IN THIS AREA

(b) In January 2016, a clinical trial of a different drug involved 128 healthy volunteers aged 18 to 55. In this trial, different doses of the drug were given to 90 of these volunteers and the others were given a placebo.

Six people, who were given the drug, became ill and had to be treated in hospital.

(i) Explain why healthy volunteers were given different doses of the drug or a placebo. (2)

.....

.....

.....

.....

.....

.....

.....

.....

.....

.....

.....

(ii) The trial tested increasing the dose of the drug. The six people who fell ill were the first to receive higher doses over the course of several days.

Which of the following is the correct ratio of those who took the drug to those who fell ill?

(1)

- A 14:1
- B 15:1
- C 18:1
- D 21:1



