



UNIVERSITY OF CAMBRIDGE INTERNATIONAL EXAMINATIONS  
General Certificate of Education  
Advanced Subsidiary Level and Advanced Level

CANDIDATE  
NAME

CENTRE  
NUMBER

--	--	--	--	--

CANDIDATE  
NUMBER

--	--	--	--



**BIOLOGY**

**9700/21**

Paper 2 Structured Questions AS

**October/November 2011**

**1 hour 15 minutes**

Candidates answer on the Question Paper.

No Additional Materials are required.

**READ THESE INSTRUCTIONS FIRST**

Write your Centre number, candidate number and name in the spaces provided at the top of this page.

Write in dark blue or black ink.

You may use a soft pencil for any diagrams, graphs or rough working.

Do not use staples, paper clips, highlighters, glue or correction fluid.

**DO NOT WRITE IN ANY BARCODES.**

Answer **all** questions.

At the end of the examination, fasten all your work securely together.

The number of marks is given in brackets [ ] at the end of each question or part question.

**For Examiner's Use**

<b>1</b>	
<b>2</b>	
<b>3</b>	
<b>4</b>	
<b>5</b>	
<b>6</b>	
<b>Total</b>	

This document consists of **15** printed pages and **1** blank page.



Answer **all** the questions.

For  
Examiner's  
Use

1 Fig. 1.1 is a diagram of a cell surface membrane.

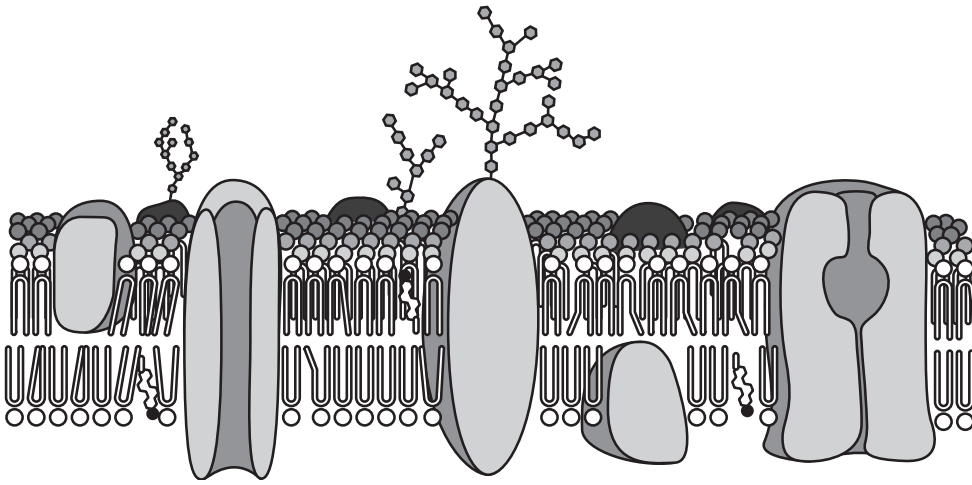


Fig. 1.1

(a) Use a label line and the appropriate letter to label each of the following on Fig. 1.1.

- P protein for active uptake of potassium ions
  - Q protein for facilitated diffusion of polar molecules
  - R receptor site for a hormone
  - S hydrophilic heads of phospholipids on the internal surface of the membrane
  - T molecule that modifies the fluidity of the membrane
- [5]

(b) Some cells take in bacteria by endocytosis.

Explain how endocytosis occurs at a cell surface membrane.

.....

.....

.....

.....

.....

.....

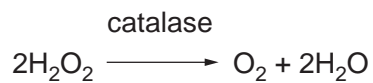
[3]

[Total: 8]

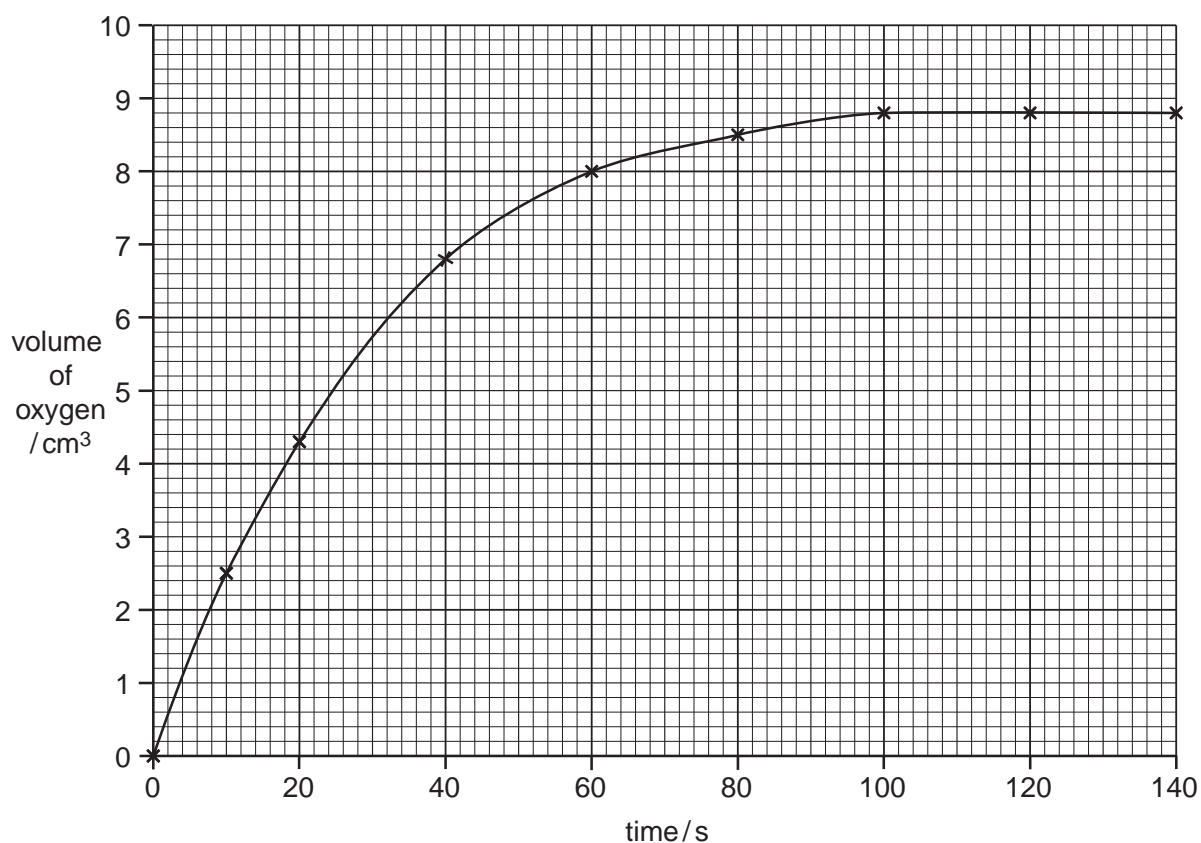
3

- 2 A student investigated the initial rate of reaction of catalase in breaking down hydrogen peroxide into oxygen and water:

For  
Examiner's  
Use



The volume of oxygen collected was recorded over a period of 140 seconds. The results are shown in Fig. 2.1.



**Fig. 2.1**

- (a) (i) Use the information in Fig. 2.1 to calculate the **initial rate of reaction** in  $\text{cm}^3 \text{s}^{-1}$ .

Show your working.

answer .....  $\text{cm}^3 \text{s}^{-1}$  [2]

(ii) Explain the change in volume of oxygen collected as shown in Fig. 2.1.

For  
Examiner's  
Use

.....

.....

.....

.....

.....

.....

.....

.....[3]

The student continued the investigation by determining the initial rates of reaction for five different concentrations of hydrogen peroxide. The line marked **W** in Fig. 2.2 shows the results.

The whole procedure was repeated after adding copper ions to the different concentrations of hydrogen peroxide. The line marked **V** on Fig. 2.2 shows the results.

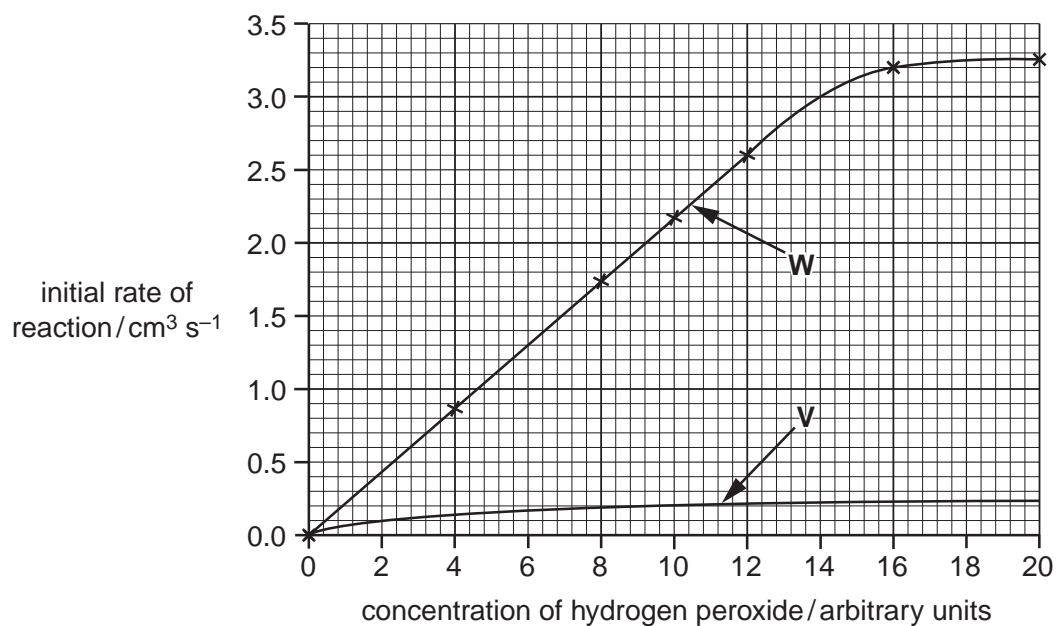


Fig. 2.2



3 Fig. 3.1 shows a molecule of haemoglobin.

For  
Examiner's  
Use

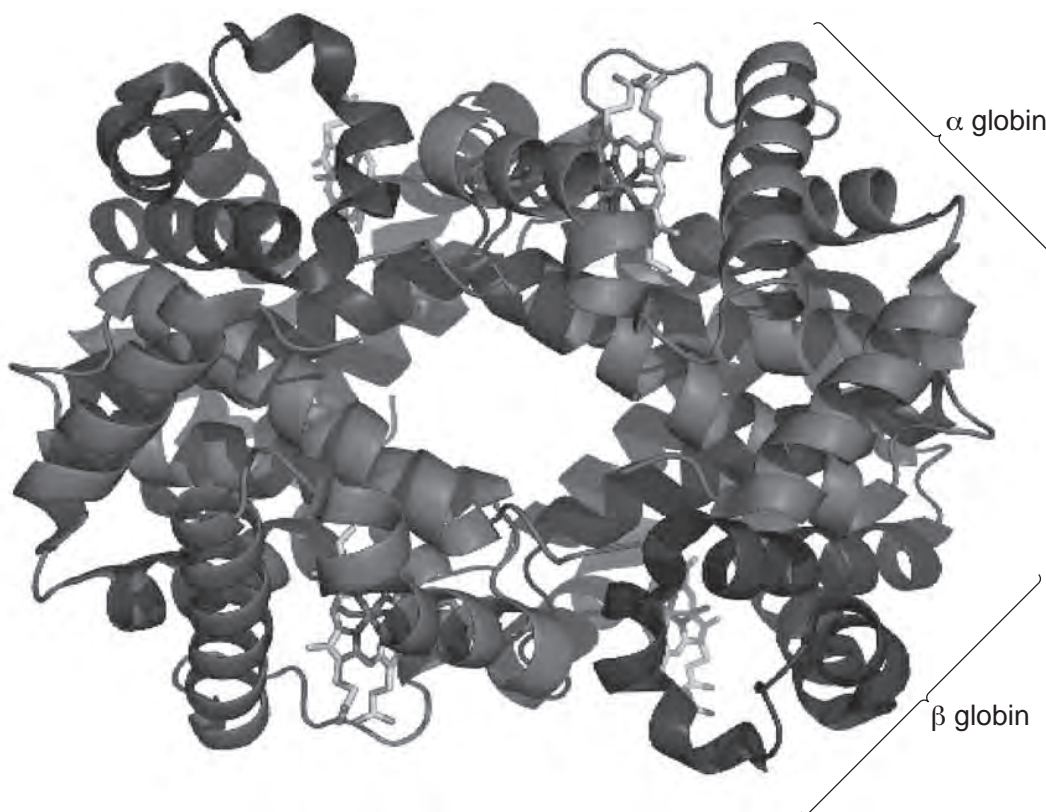


Fig. 3.1

(a) Explain how a molecule of haemoglobin shows the four levels of organisation of protein molecules.

*primary structure* .....

.....

.....

*secondary structure* .....

.....

.....

*tertiary structure* .....

.....

.....

*quaternary structure* .....

.....

.....[4]



8

(c) Collagen is a fibrous protein found in many tissues in animals.

(i) State the function of collagen in the walls of arteries.

.....  
.....[1]

(ii) State **one** way in which the **structure** of collagen differs from the structure of haemoglobin.

.....  
.....[1]

[Total: 9]

For  
Examiner's  
Use



4 (a) (i) Name two factors that increase the chances that cancer will develop.

1. ....

2. .... [2]

(ii) State why lung cancer is categorised as a non-infectious disease.

.....

..... [1]

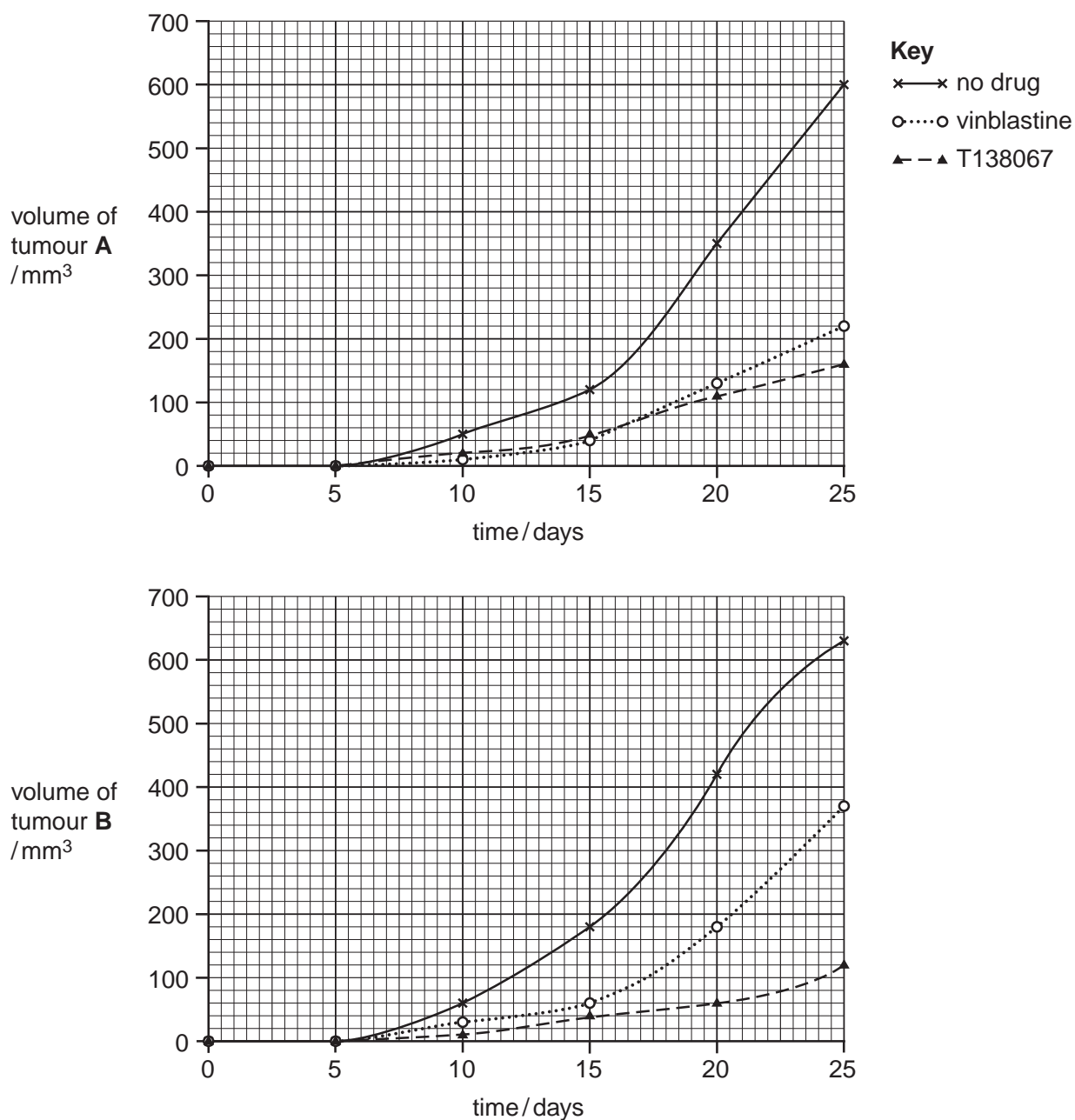
For  
Examiner's  
Use

The effectiveness of anti-cancer drugs may be determined by growing different tumours in culture.

For  
Examiner's  
Use

The effectiveness of two drugs on two human tumours (**A** and **B**) from different tissues was assessed. The two drugs, T138067 and vinblastine, were added to the tumours in culture on days 5, 12 and 19. The volumes of the tumours were compared with the volumes of tumours that were not treated with any drugs.

The results are shown in Fig. 4.1.



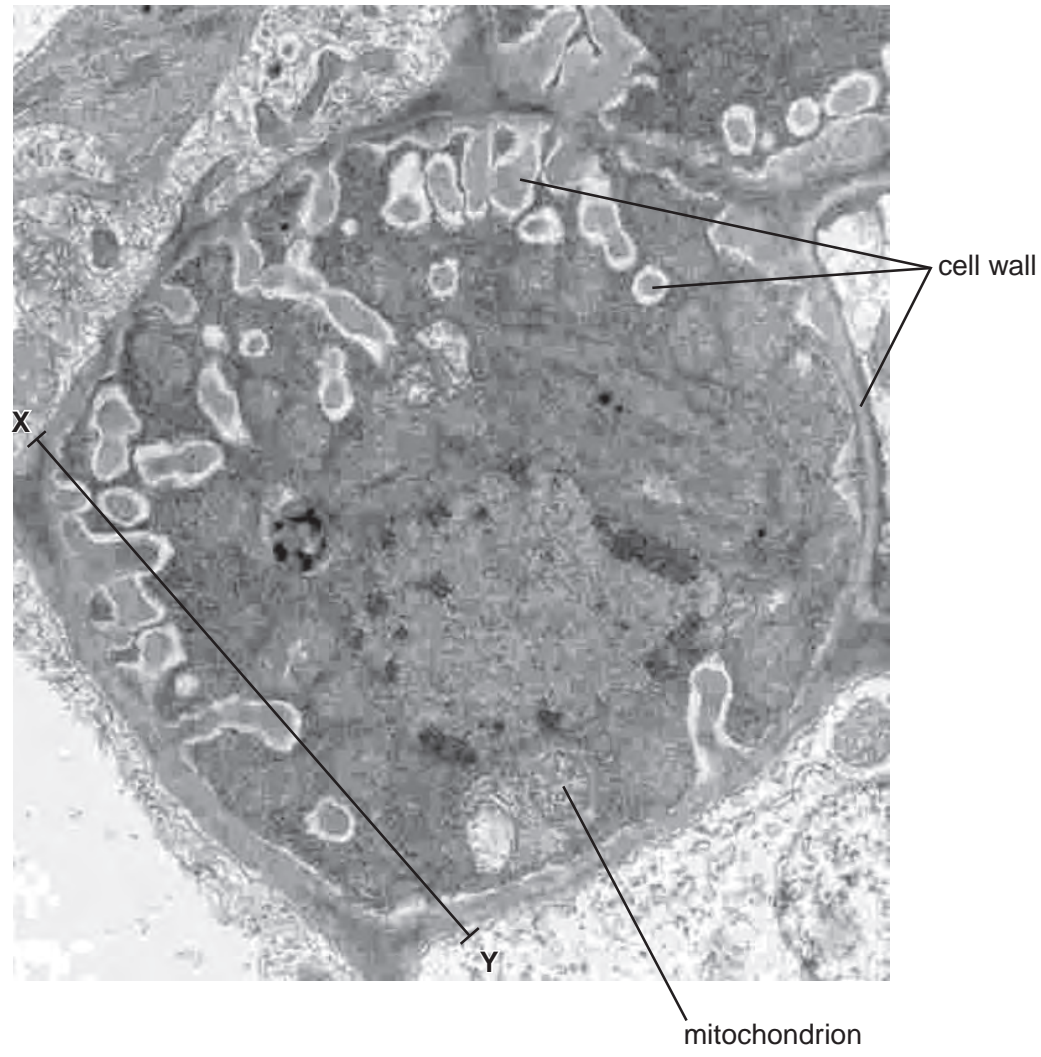
**Fig. 4.1**



- 5 Phloem transfer cells are modified companion cells that move sucrose and other assimilates from mesophyll tissue into phloem sieve tube elements.

For  
Examiner's  
Use

Fig. 5.1 is an electron micrograph of a phloem transfer cell.



magnification =  $\times 10\,000$

**Fig. 5.1**

- (a) Calculate the actual distance across the transfer cell from X to Y.  
Show your working and express your answer to the nearest micrometre.

answer .....  $\mu\text{m}$  [2]



- 6 Phagocytes and lymphocytes are part of the body's cellular response to infection by pathogens.

For  
Examiner's  
Use

Fig. 6.1 shows the origin and maturation of phagocytes and lymphocytes.

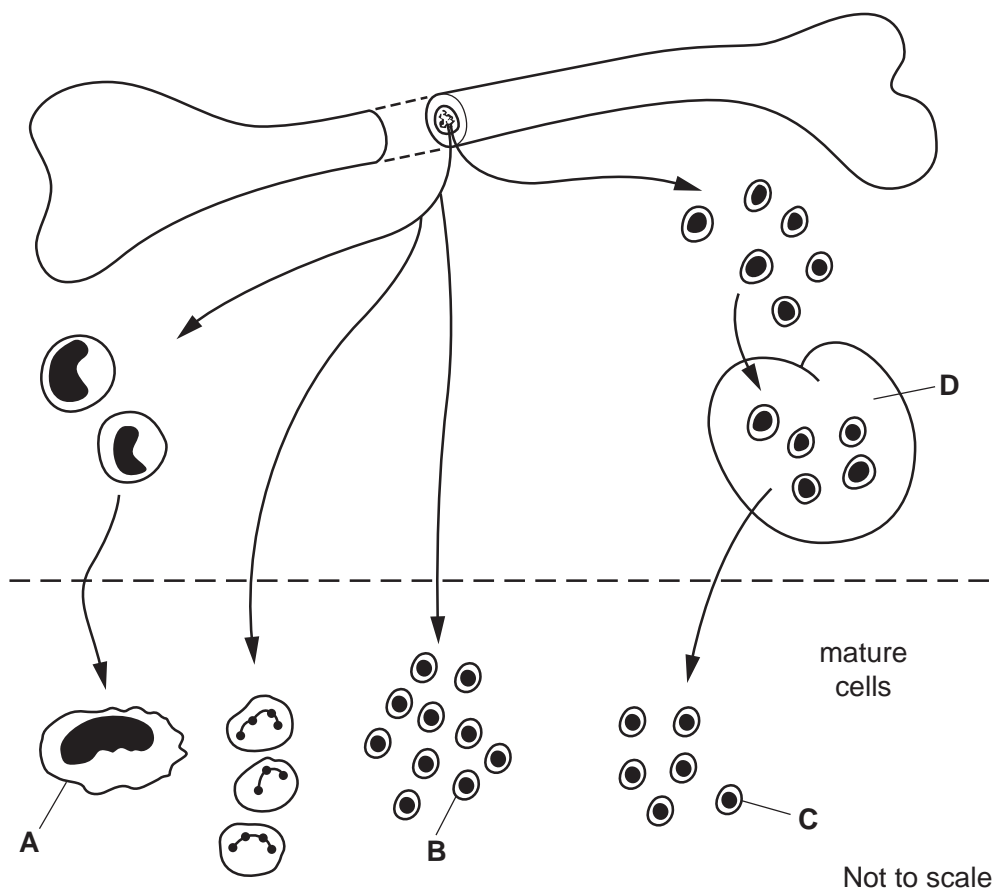


Fig. 6.1

- (a) Name the site of origin of phagocytes and lymphocytes.

..... [1]

- (b) Name:

- (i) cells A, B and C

A .....

B .....

C ..... [3]

- (ii) organ D.

..... [1]



## BLANK PAGE

---

*Copyright Acknowledgements:*

Question 5, Fig. 5.1 © "Plant Cell Biology on DVD"; 2007; by B E S Gunning; [plantcellbiologdvdyon.com](http://plantcellbiologdvdyon.com).

Permission to reproduce items where third-party owned material protected by copyright is included has been sought and cleared where possible. Every reasonable effort has been made by the publisher (UCLES) to trace copyright holders, but if any items requiring clearance have unwittingly been included, the publisher will be pleased to make amends at the earliest possible opportunity.

University of Cambridge International Examinations is part of the Cambridge Assessment Group. Cambridge Assessment is the brand name of University of Cambridge Local Examinations Syndicate (UCLES), which is itself a department of the University of Cambridge.