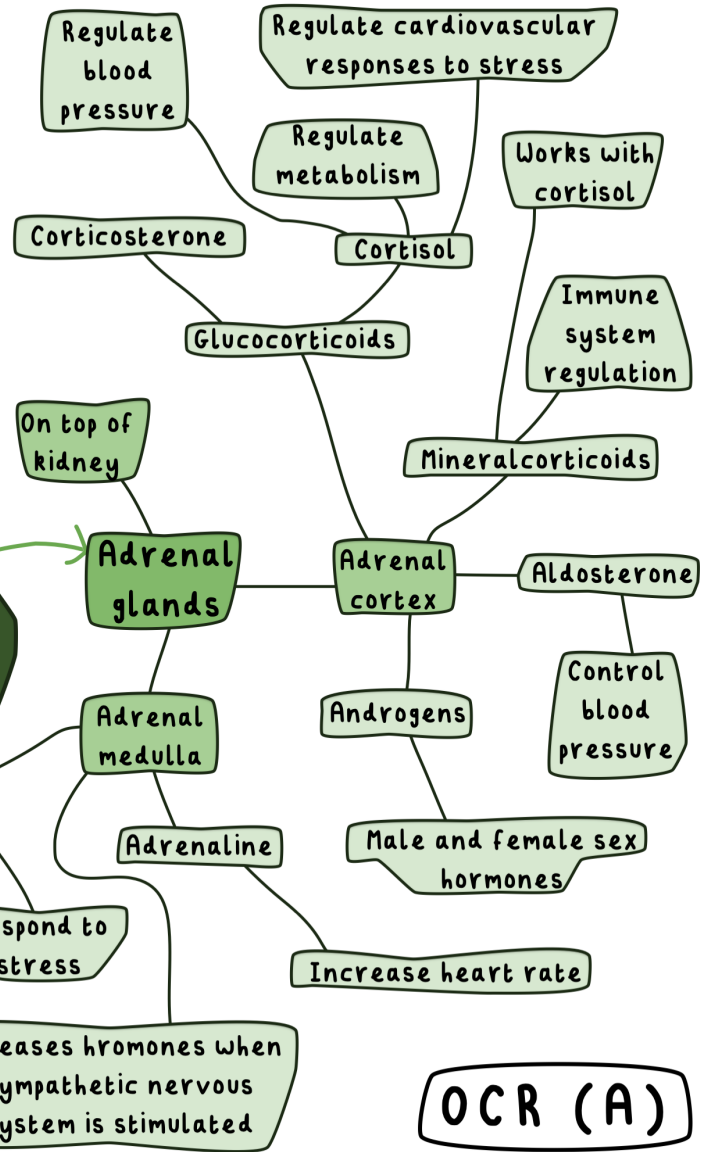
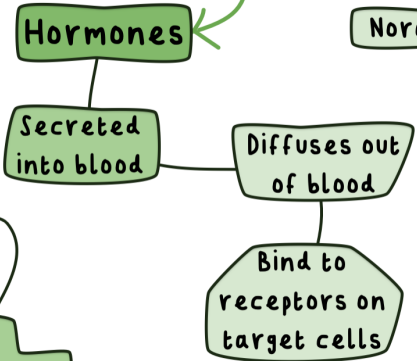
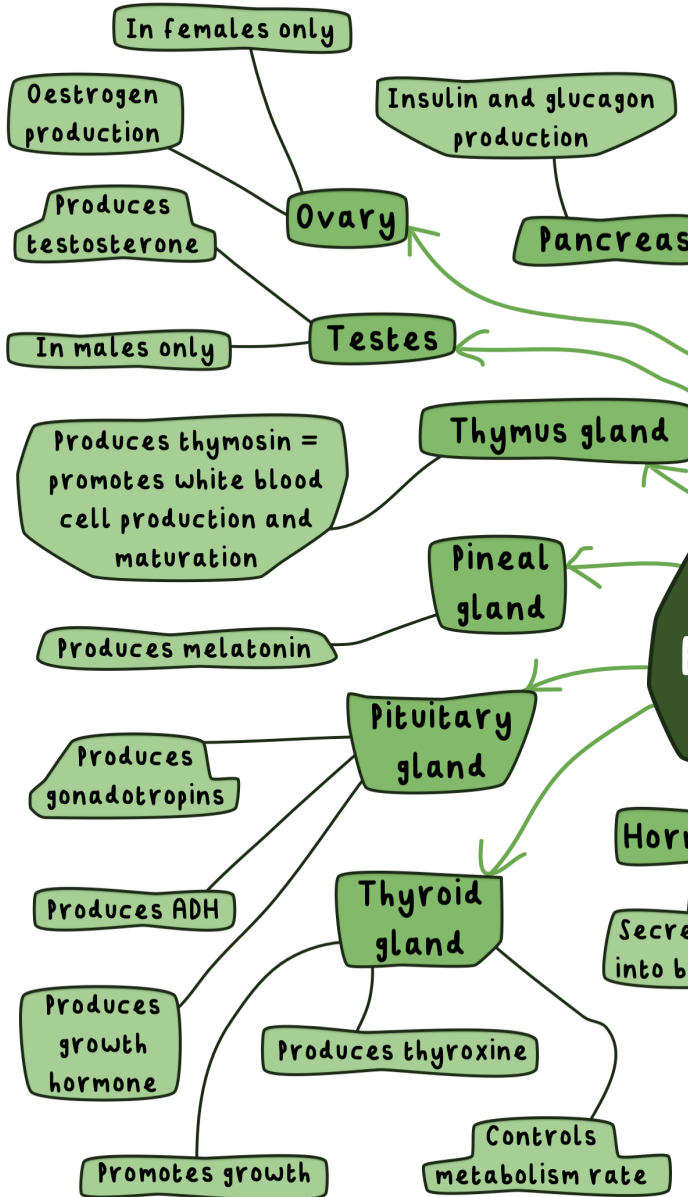


5.1.4 HORMONAL COMMUNICATION: ENDOCRINE SYSTEM - ENDOCRINE GLANDS

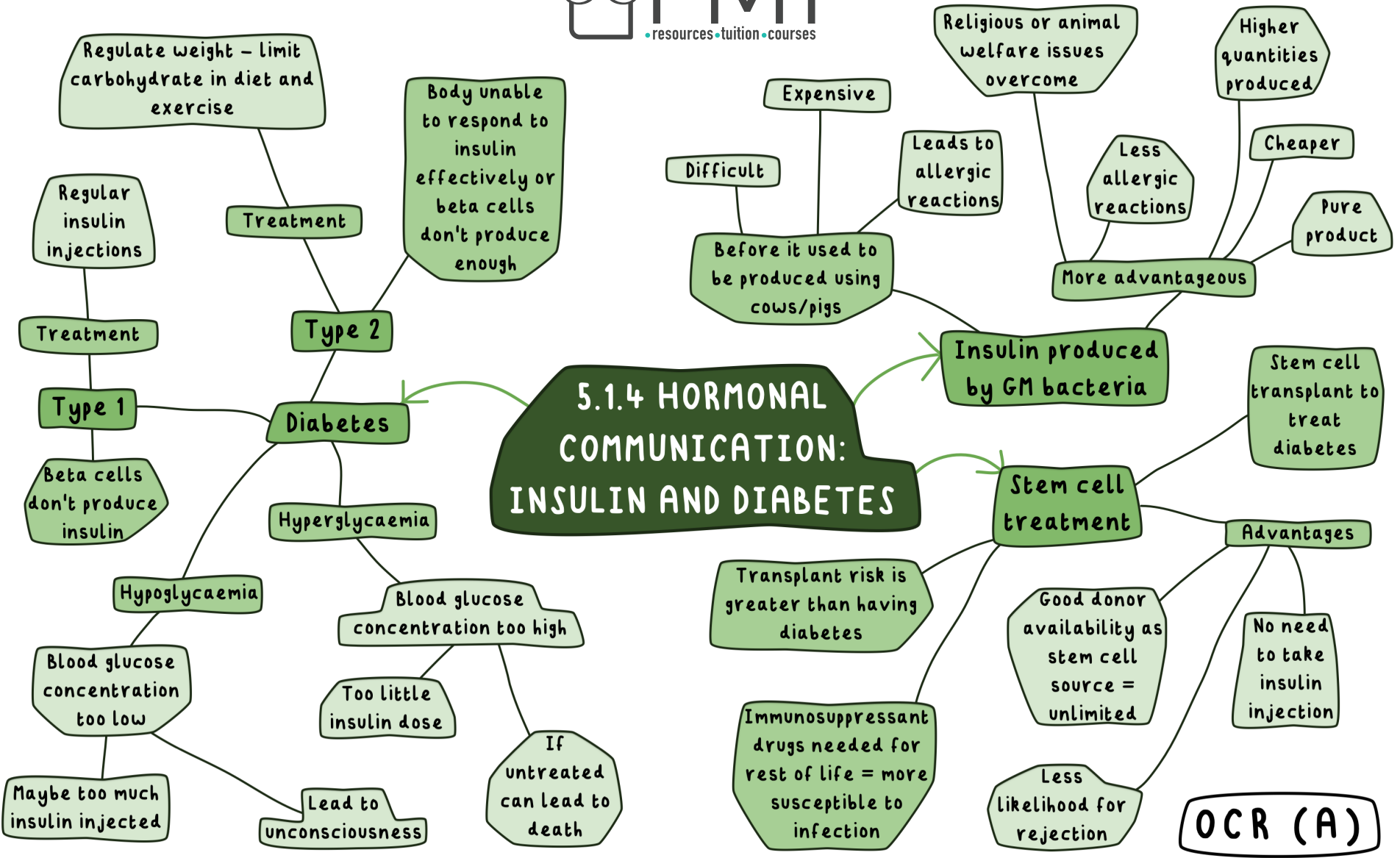
Group of specialised cells that secrete hormones directly into bloodstream



OCR (A)



5.1.4 HORMONAL COMMUNICATION: INSULIN AND DIABETES



OCR (A)



5.1.4 HORMONAL COMMUNICATION: BLOOD GLUCOSE

