

A Level Physics A

H556/02 Exploring physics

Question Set 14

- 1* A metal circular plate is rotated at a constant frequency by an electric motor. The plate has a small hole close to its rim. Fig. 17.1 shows an arrangement used by a student to determine the frequency of the rotating plate.

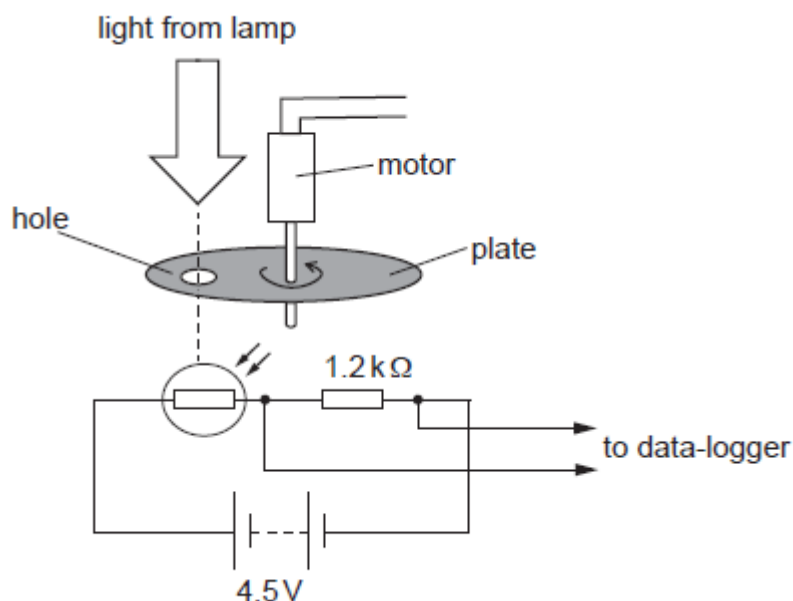


Fig. 17.1

A light-dependent resistor (LDR) and a fixed resistor of resistance $1.2 \text{ k}\Omega$ are connected in series to a battery. The battery has e.m.f. 4.5 V and has negligible internal resistance. The potential difference V across the resistor is monitored using a data-logger.

Fig. 17.2 shows the variation of V with time t .

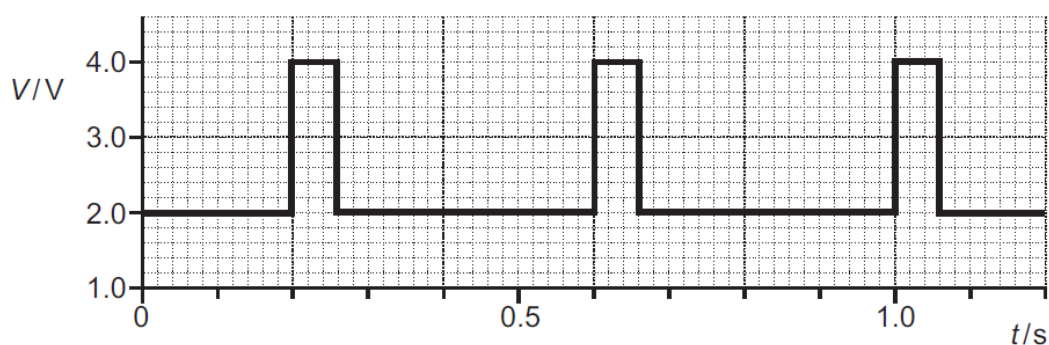


Fig. 17.2

Use your knowledge and understanding of potential divider circuits to explain the shape of the graph shown in Fig. 17.2. Include in your answer the maximum and minimum values of the resistance of the LDR.

Describe how the student can determine the frequency of the rotating plate.

[6]

Total Marks for Question Set 14: 6

OCR

Oxford Cambridge and RSA

Copyright Information

OCR is committed to seeking permission to reproduce all third-party content that it uses in its assessment materials. OCR has attempted to identify and contact all copyright holders whose work is used in this paper. To avoid the issue of disclosure of answer-related information to candidates, all copyright acknowledgements are reproduced in the OCR Copyright Acknowledgements Booklet. This is produced for each series of examinations and is freely available to download from our public website (www.ocr.org.uk) after the live examination series.

If OCR has unwittingly failed to correctly acknowledge or clear any third-party content in this assessment material, OCR will be happy to correct its mistake at the earliest possible opportunity.

For queries or further information please contact The OCR Copyright Team, The Triangle Building, Shaftesbury Road, Cambridge CB2 8EA.

OCR is part of the Cambridge Assessment Group; Cambridge Assessment is the brand name of University of Cambridge Local Examinations Syndicate (UCLES), which is itself a department of the University of Cambridge