

A Level Physics A
H556/01 Modelling physics

Question Set 5

1

A group of students are conducting an experiment in the laboratory to determine the value of absolute zero by heating a fixed mass of gas. The volume of the gas is kept constant.

Fig. 17.1 shows the arrangement used by the students.

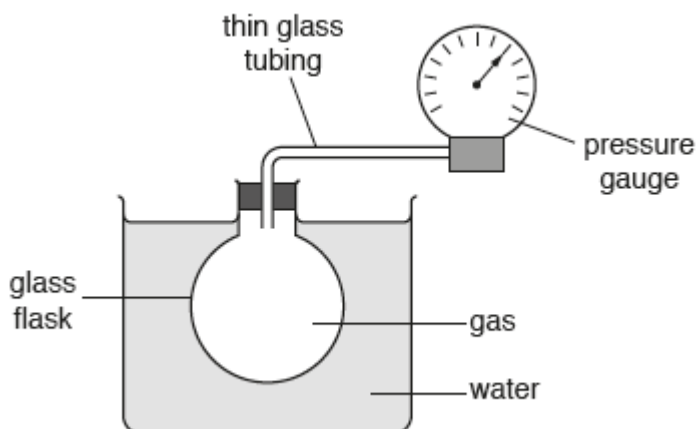


Fig. 17.1

The gas is heated using a water bath. The temperature θ of the water is increased from 5°C to 70°C . The temperature of the water bath is assumed to be the same as the temperature of the gas. The pressure p of the gas is measured using a pressure gauge.

The results from the students are shown in a table.

$\theta/^\circ\text{C}$	p/kPa
5 ± 1	224 ± 3
13 ± 1	231 ± 3
22 ± 1	238 ± 3
35 ± 1	248 ± 3
44 ± 1	
53 ± 1	262 ± 3
62 ± 1	269 ± 3
70 ± 1	276 ± 3

- (a) Describe and explain how the students may have made accurate measurements of the temperature θ .

[2]

- (b) Fig. 17.2 shows the pressure gauge. Measurements of p can be made using the kPa scale or the psi (pounds per square inch) scale. The students used the psi scale to measure pressure and then converted the reading to pressure in kPa.

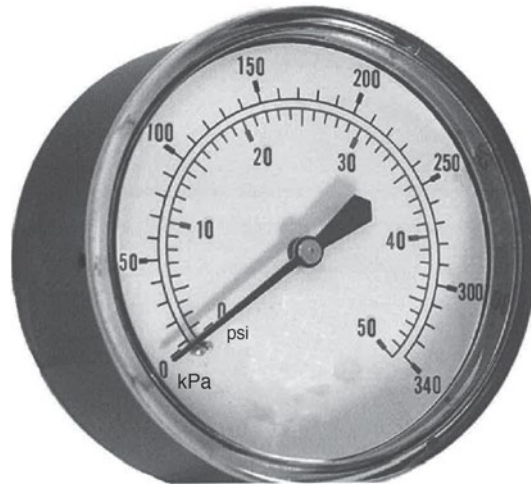


Fig. 17.2

- (i) Suggest why it was sensible to use the psi scale to measure p . [1]
- (ii) The students made a reading of p of 37.0 ± 0.5 psi when θ was 44 ± 1 °C. Convert this value of p from psi to kPa. Complete the table for the missing value of p . Include the absolute uncertainty in p .

1 pound of force = 4.448 N
1 inch = 0.0254 m

[2]

(c) Fig. 17.3 shows the graph of p against θ .

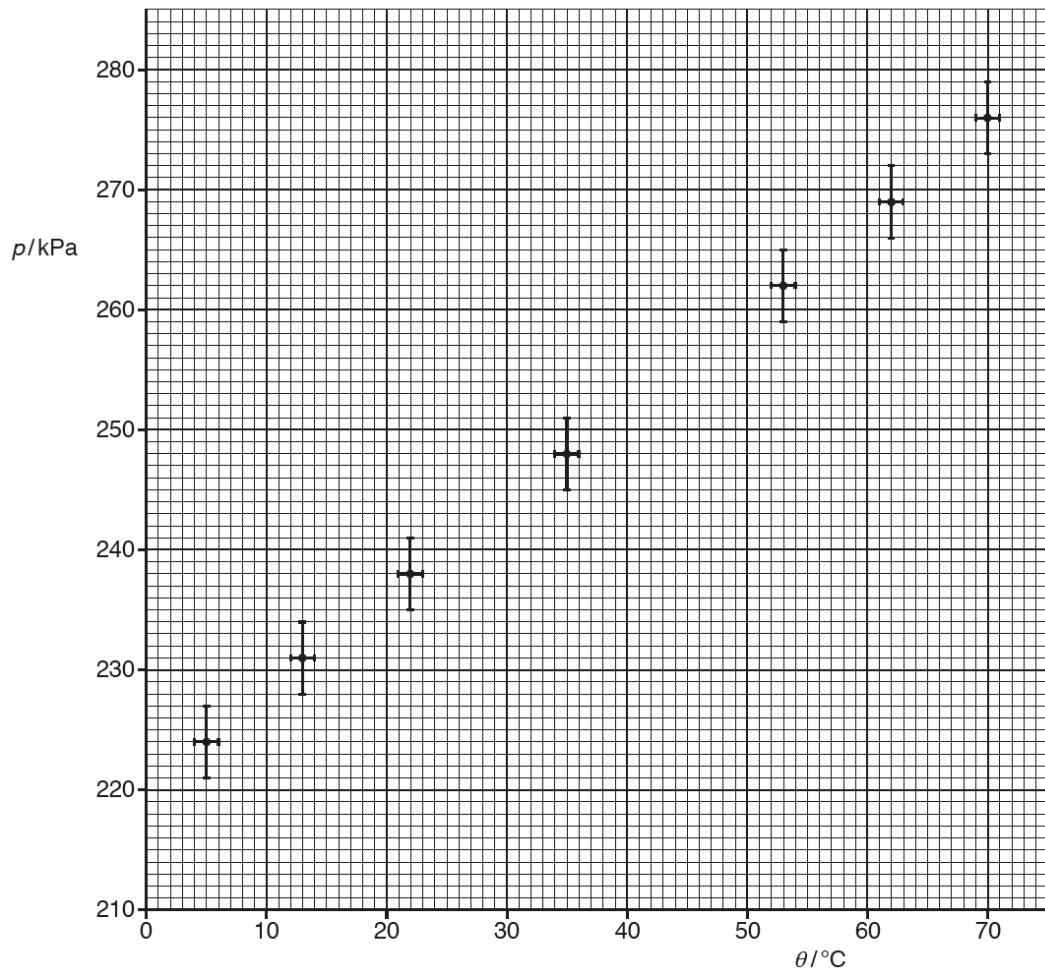


Fig. 17.3

(i) Plot the missing data point and the error bars on Fig. 17.3. [1]

(ii)* Explain what is meant by *absolute zero*. Describe how Fig. 17.3 can be used to determine the value of absolute zero.

Determine the value of absolute zero. You may assume that the gas behaves as an ideal gas.

[6]

(d) Describe, without doing any calculations, how you could use Fig. 17.3 to determine the actual uncertainty in the value of absolute zero in (c)(ii). [2]

(e) The experiment is repeated as the water bath quickly cools from 70°C to 5°C . Absolute zero was found to be -390°C .

Compare this value with your value from (c)(ii) and explain why the values may differ. Describe an experimental approach that could be taken to avoid systematic error in the determination of absolute zero.

[4]

Total Marks for Question Set 5: 18

OCR

Oxford Cambridge and RSA

Copyright Information

OCR is committed to seeking permission to reproduce all third-party content that it uses in its assessment materials. OCR has attempted to identify and contact all copyright holders whose work is used in this paper. To avoid the issue of disclosure of answer-related information to candidates, all copyright acknowledgements are reproduced in the OCR Copyright Acknowledgements Booklet. This is produced for each series of examinations and is freely available to download from our public website (www.ocr.org.uk) after the live examination series.

If OCR has unwittingly failed to correctly acknowledge or clear any third-party content in this assessment material, OCR will be happy to correct its mistake at the earliest possible opportunity.

For queries or further information please contact The OCR Copyright Team, The Triangle Building, Shaftesbury Road, Cambridge CB2 8EA.

OCR is part of the Cambridge Assessment Group; Cambridge Assessment is the brand name of University of Cambridge Local Examinations Syndicate (UCLES), which is itself a department of the University of Cambridge