

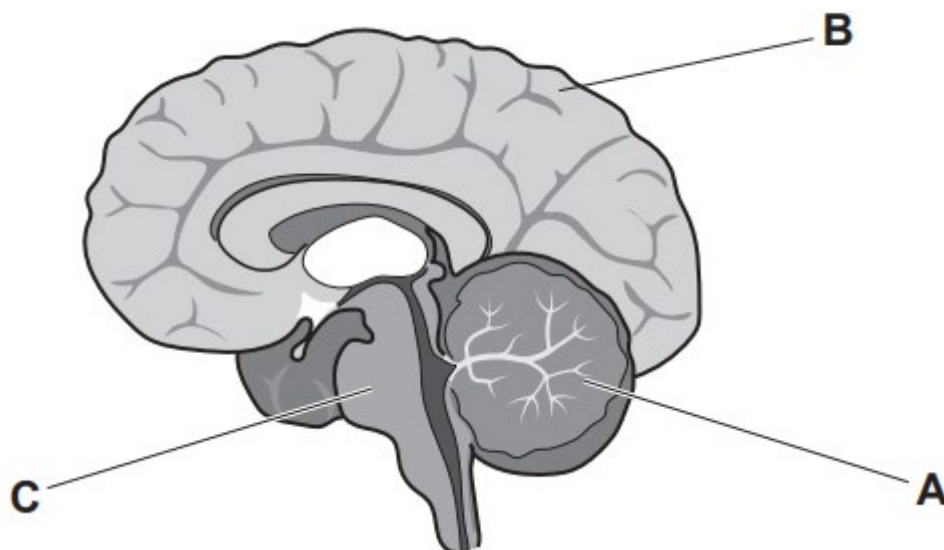
GCSE Biology B (Twenty First Century Science)
J257/03 Breadth in Biology (Higher)

Question Set 3

1

Different areas of the brain are responsible for different functions.

Three areas have been labelled **A**, **B** and **C** on the diagram of the brain.



- (a) (i) The table describes the functions of areas **A**, **B** and **C**.

Complete the table by writing the correct area of the brain for each function.

Area of the brain	Function
	Responsible for conscious movement.
	Responsible for intelligence, memory, consciousness and language.
	Responsible for the regulation of heart rate and breathing rate.

[2]

- (ii) Scientists want to find out more about the functions of the brain. One way they can do this is to use patients with brain damage.

Suggest why there are concerns about using patients with brain damage.

[1]

- (iii) Write down **one other** way scientists could study the brain.

[1]

- (b) The cerebral cortex is a highly folded area of the brain made up of billions of neurons.

Describe the features of a neuron that allow it to transmit electrical impulses quickly and over long distances.

[2]

(c) Parkinson's disease is a disease of the central nervous system.

It is caused by the loss of neurons in one part of the brain. These neurons are responsible for producing a transmitter substance called dopamine.

(i) Dopamine acts as a transmitter substance in parts of the brain and nervous system that control movement.

Which neurons are most likely to be affected by Parkinson's disease?

Tick (✓) **one** box.

Relay neurons only.

Relay and motor neurons.

Sensory neurons only.

Sensory and motor neurons.

[1]

(ii) At a synapse, transmitter substances are released from the first neuron.

Which word describes how the transmitter substances move across the gap from the first neuron to the second neuron?

Tick (✓) **one** box.

Active transport

Diffusion

Net movement

Osmosis

[1]

(iii) Scientists have been investigating the use of stem cells in the treatment of Parkinson's disease.

Suggest **one** feature of stem cells that makes them useful in the treatment of Parkinson's disease.

[1]

Total Marks for Question Set 3: 9

OCR

Oxford Cambridge and RSA

Copyright Information

OCR is committed to seeking permission to reproduce all third-party content that it uses in its assessment materials. OCR has attempted to identify and contact all copyright holders whose work is used in this paper. To avoid the issue of disclosure of answer-related information to candidates, all copyright acknowledgements are reproduced in the OCR Copyright Acknowledgements Booklet. This is produced for each series of examinations and is freely available to download from our public website (www.ocr.org.uk) after the live examination series.

If OCR has unwittingly failed to correctly acknowledge or clear any third-party content in this assessment material, OCR will be happy to correct its mistake at the earliest possible opportunity.

For queries or further information please contact The OCR Copyright Team, The Triangle Building, Shaftesbury Road, Cambridge CB2 8EA.

OCR is part of the Cambridge Assessment Group; Cambridge Assessment is the brand name of University of Cambridge Local Examinations Syndicate (UCLES), which is itself a department of the University of Cambridge