

## **GCSE Biology A (Gateway)**

**J247/04 Biology A B4-B6 and B7 (Higher Tier)**

**Question Set: 9**

- 1 A student investigates the plants growing underneath a tree.



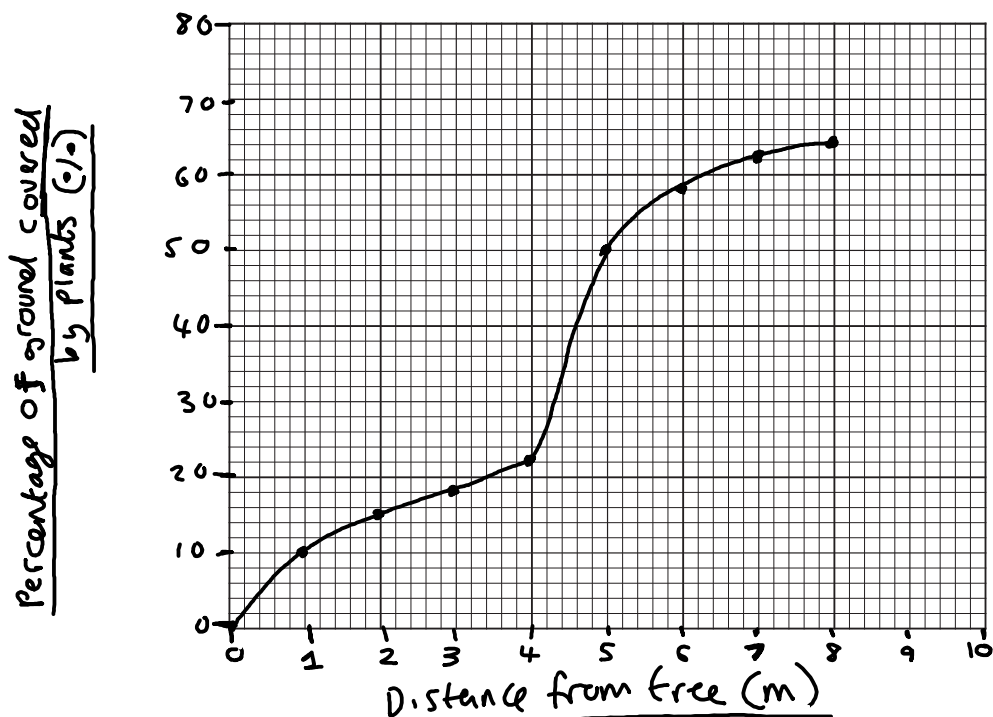
He lays out a tape measure on the ground, starting at the tree. He then places a quadrat on the ground.

He measures the percentage of the ground in the quadrat that is covered by plants. He repeats this every metre away from the tree.

The table shows his results.

<b>Distance from the tree (m)</b>	<b>Percentage of ground covered by plants (%)</b>
1	10
2	15
3	18
4	22
5	50
6	58
7	62
8	64

(a) Plot a graph of the student's results and draw a line of best fit.



[5]

(b) The student thinks that shade from the tree is affecting the plants. Explain how the student's results show this.

There is less percentage cover of plants closer to the tree - This is due to less light so less photosynthesis. Therefore the plants don't grow much in this area as less food produced.

[4]

**Total Marks for Question Set 9: 9**

---

**OCR**  
Oxford Cambridge and RSA

**Copyright Information**

OCR is committed to seeking permission to reproduce all third-party content that it uses in its assessment materials. OCR has attempted to identify and contact all copyright holders whose work is used in this paper. To avoid the issue of disclosure of answer-related information to candidates, all copyright acknowledgements are reproduced in the OCR Copyright Acknowledgements Booklet. This is produced for each series of examinations and is freely available to download from our public website ([www.ocr.org.uk](http://www.ocr.org.uk)) after the live examination series.

If OCR has unwittingly failed to correctly acknowledge or clear any third-party content in this assessment material, OCR will be happy to correct its mistake at the earliest possible opportunity.

For queries or further information please contact The OCR Copyright Team, The Triangle Building, Shaftesbury Road, Cambridge CB2 8EA.

OCR is part of the Cambridge Assessment Group; Cambridge Assessment is the brand name of University of Cambridge Local Examinations Syndicate (UCLES), which is itself a department of the University of Cambridge