

GCSE Biology A (Gateway)

J247/01 B1-B3 and B7 Foundation (Foundation Tier)

Question Set 3

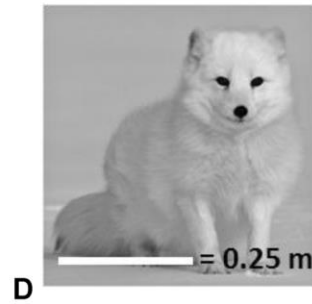
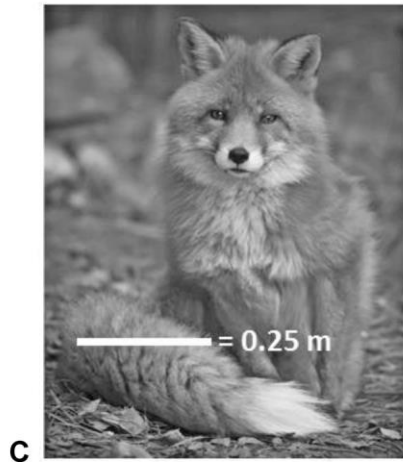
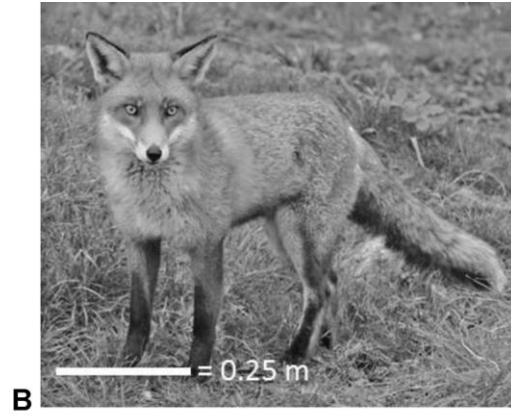
Multiple Choice Questions

B3: Organism Level Systems

1

The pictures show four foxes.

Which fox has the largest surface area : volume ratio?

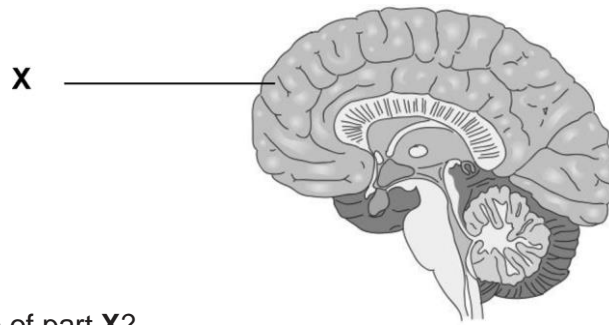


Your answer

A

[1]

- 2 The diagram shows the brain.



What is the name of part X?

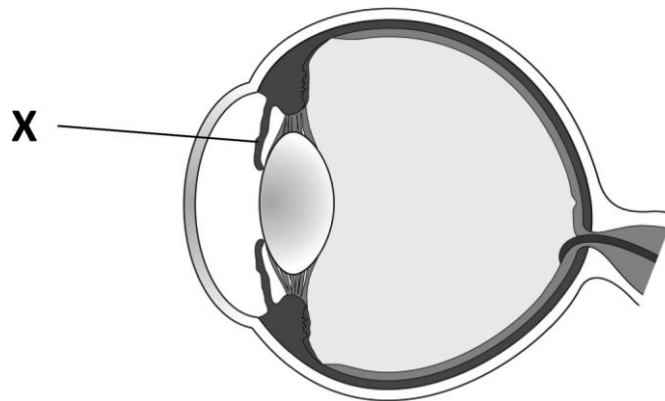
- A Cerebellum
- B Cerebrum
- C Hypothalamus
- D Medulla

Your answer

B

[1]

- 3 The diagram shows the eye.



What is the name of part X?

- A Cornea
- B Iris
- C Lens
- D Pupil

Your answer

B

[1]

4 What type of reactions are photosynthesis and respiration?

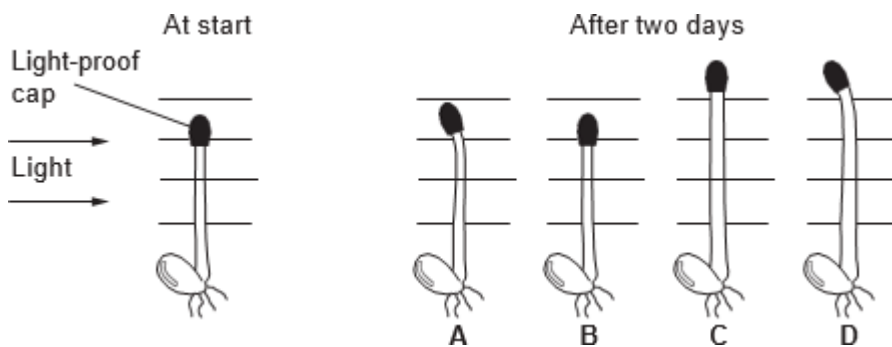
	photosynthesis	respiration
A	endothermic	endothermic
B	endothermic	exothermic
C	exothermic	endothermic
D	exothermic	exothermic

Your answer

B

[1]

5 Seedlings were grown with a light-proof cap over the tip. The seedlings had light from one direction only.



Which diagram shows the correct growth of the seedling after two days in these conditions?

Your answer

C

[1]

6 Which of these can be used to treat type 2 diabetes but **not** type 1?

- A Diet and exercise
- B Exercise only
- C Insulin and diet
- D Insulin, diet and exercise

Your answer

A

[1]

7 Plant roots respond to gravity by growing downwards.

What is this response called?

- A Negative gravitropism
- B Negative phototropism
- C Positive gravitropism
- D Positive phototropism

Your answer

C

[1]

8 Which part of the eye does not function correctly in colour blindness?

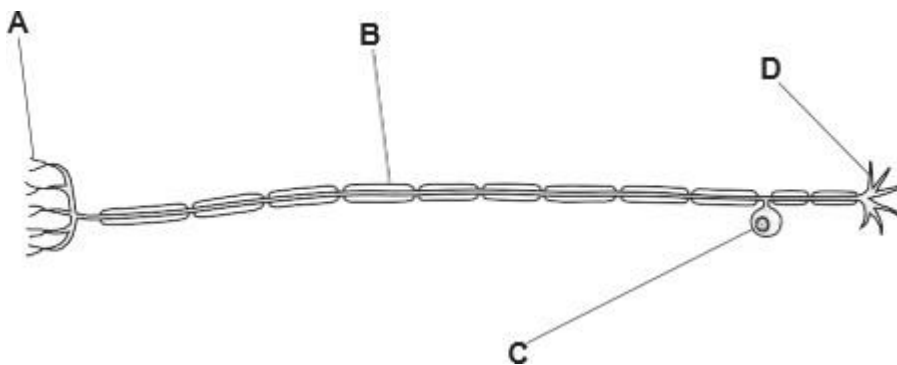
- A Cornea
- B Iris
- C Lens
- D Retina

Your answer

D

[1]

9 Which label is pointing to the myelin sheath in a motor neurone?



Your answer

B

[1]

10 What is the name of the gap between two neurones?

- A Axon
- B Dendrite
- C Lumen
- D Synapse

Your answer

D

[1]

11 Light travels through different parts to reach the back of the eye.

Which structure does light pass through first when it enters the eye?

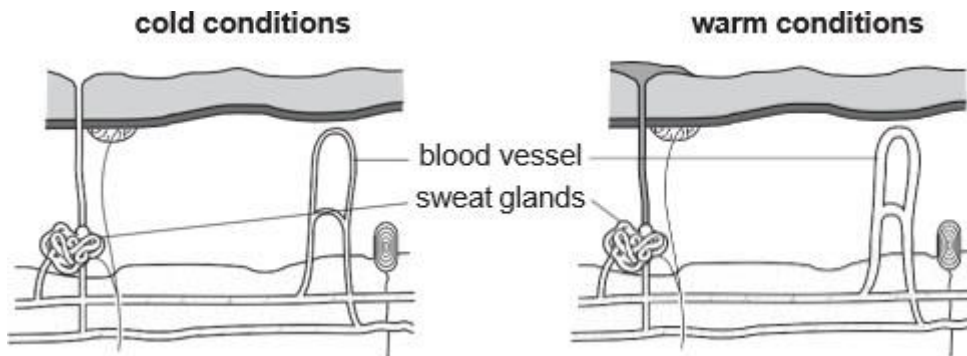
- A Cornea
- B Lens
- C Pupil
- D Retina

Your answer

A

[1]

12 The diagrams show changes in the skin as a person moves from cold to warm conditions.



Which processes happen in the skin as a result of the change from cold to warm conditions?

- A Blood vessels widen and sweat is released.
- B Blood vessels narrow and sweat is released.
- C Blood vessels widen and sweat production stops.
- D Blood vessels narrow and sweat production stops.

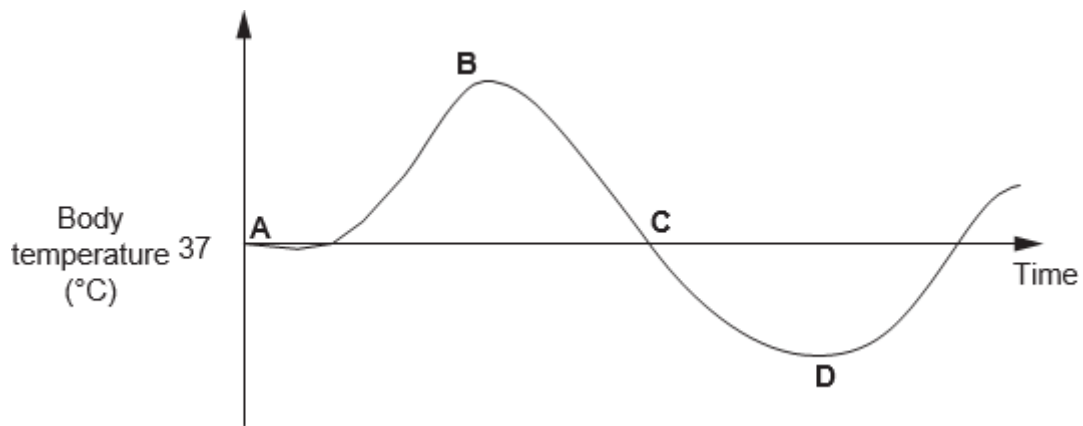
Your answer

A

[1]

13 The graph shows changes to body temperature during temperature regulation.

Which letter on the graph shows when shivering is occurring?



Your answer

D

[1]

14 Which part of the brain controls the heartbeat and breathing?

- A Cerebrum
- B Hypothalamus
- C Medulla
- D Pituitary

Your answer

C

[1]

Total Marks for Question Set 3: 14

OCR

Oxford Cambridge and RSA

Copyright Information

OCR is committed to seeking permission to reproduce all third-party content that it uses in its assessment materials. OCR has attempted to identify and contact all copyright holders whose work is used in this paper. To avoid the issue of disclosure of answer-related information to candidates, all copyright acknowledgements are reproduced in the OCR Copyright Acknowledgements Booklet. This is produced for each series of examinations and is freely available to download from our public website (www.ocr.org.uk) after the live examination series.

If OCR has unwittingly failed to correctly acknowledge or clear any third-party content in this assessment material, OCR will be happy to correct its mistake at the earliest possible opportunity.

For queries or further information please contact The OCR Copyright Team, The Triangle Building, Shaftesbury Road, Cambridge CB2 8EA.

OCR is part of the Cambridge Assessment Group; Cambridge Assessment is the brand name of University of Cambridge Local Examinations Syndicate (UCLES), which is itself a department of the University of Cambridge