



Additional Assessment Materials  
Summer 2021

Pearson Edexcel GCSE in Biology (1BI0)  
Foundation

Resource Set Topic 2: Cells and Control

Questions

(Public release version)

## **Pearson: helping people progress, everywhere**

Pearson aspires to be the world's leading learning company. Our aim is to help everyone progress in their lives through education. We believe in every kind of learning, for all kinds of people, wherever they are in the world. We've been involved in education for over 150 years, and by working across 70 countries, in 100 languages, we have built an international reputation for our commitment to high standards and raising achievement through innovation in education. Find out more about how we can help you and your students at: [www.pearson.com/uk](http://www.pearson.com/uk)

## General guidance to Additional Assessment Materials for use in 2021

### Context

- Additional Assessment Materials are being produced for GCSE, AS and A levels (with the exception of Art and Design).
- The Additional Assessment Materials presented in this booklet are an **optional** part of the range of evidence teachers may use when deciding on a candidate's grade.
- 2021 Additional Assessment Materials have been drawn from previous examination materials, namely past papers.
- Additional Assessment Materials have come from past papers both published (those materials available publicly) and unpublished (those currently under padlock to our centres) presented in a different format to allow teachers to adapt them for use with candidate.

### Purpose

- The purpose of this resource to provide qualification-specific sets/groups of questions covering the knowledge, skills and understanding relevant to this Pearson qualification.
- This document should be used in conjunction with the mapping guidance which will map content and/or skills covered within each set of questions.
- These materials are only intended to support the summer 2021 series.

4 Figure 4 shows a picture seen through healthy eyes and the same picture seen through eyes affected by cataracts.



picture seen through healthy eyes



picture seen through eyes with cataracts

**Figure 4**

(a) (i) In which part of the eye do cataracts form?

(1)

- A retina
- B iris
- C cornea
- D lens

(ii) Explain why the picture seen through eyes with cataracts is less clear.

(2)

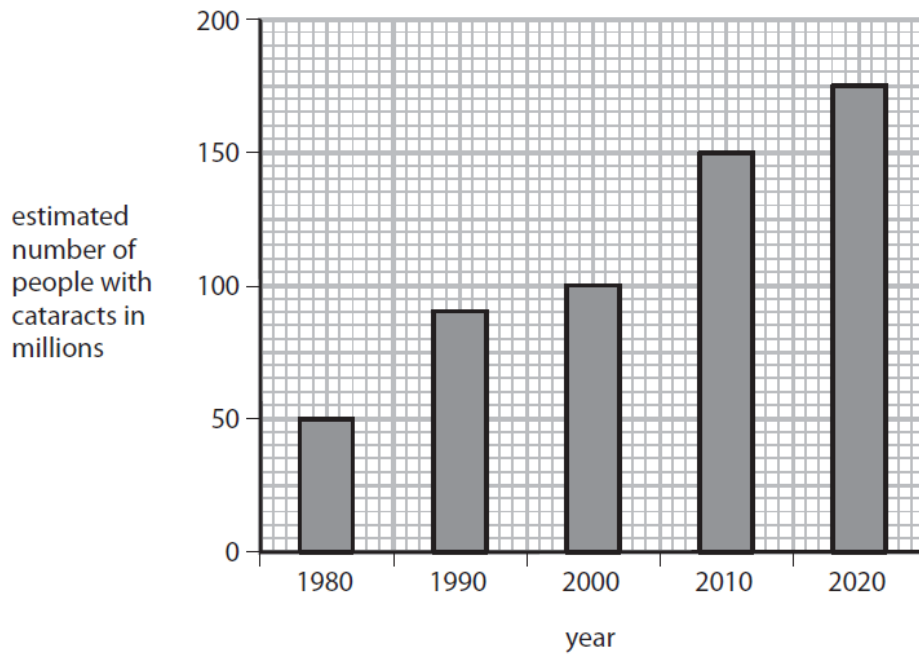
.....

.....

.....

.....

(b) Figure 5 shows the estimated number of people with cataracts in the world between 1980 and 2020.



**Figure 5**

Describe the change in the estimated number of people with cataracts between 1980 and 2020.

(2)

.....

.....

.....

.....

(c) (i) Explain how cataracts are currently treated.

(2)

.....

.....

.....

.....

(ii) Scientists are developing a new treatment using eye drops for cataracts.

Describe the advantages of using eye drops to treat cataracts rather than the current treatment.

(2)

.....

.....

.....

.....

6 (a) A student cut a piece of onion and placed it on a microscope slide.

The student then placed this slide on the stage of a light microscope and looked through the eyepiece.

No cells could be seen in the piece of onion.

Explain **two** ways this method could be improved to see details of the onion cells.

(4)

1.....

.....

.....

.....

.....

2.....

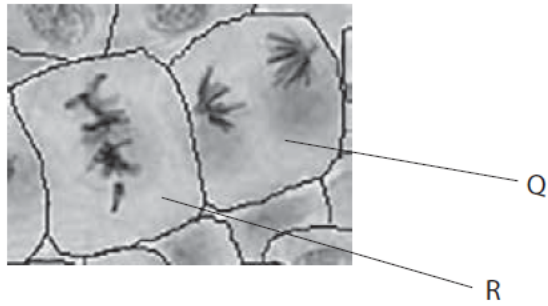
.....

.....

.....

.....

(b) Figure 7 shows mitosis occurring in some plant cells.



**Figure 7**

(i) The cells in Figure 7 were taken from a rapidly growing part of a plant.  
Which part of a plant has rapidly dividing cells?

(1)

- A chloroplast
- B epithelium
- C meristem
- D vacuole

(ii) Which stage of mitosis is shown in cell R?

(1)

- A prophase
- B metaphase
- C anaphase
- D telophase

(iii) Describe **two** genetic similarities of the new cells that would be produced by cell Q in Figure 7.

(2)

1.....

.....

2.....

.....

(iv) The cells in Figure 7 were heated in hydrochloric acid.

State **two** safety precautions that should be taken when heating hydrochloric acid. (2)

- 1.....
- 2.....

(c) Explain **one** advantage of using an electron microscope to observe plant cells. (2)

.....

.....

.....

.....

2 (a) A student investigated mitosis in the root tip of a garlic plant.

(i) Explain why the student used the tip of the root. (2)

.....

.....

.....

.....

.....

.....



(ii) The student squashed the root tip on a microscope slide to spread out the cells.

The slide was placed on the stage of a microscope.

Describe how to use the microscope to obtain a clear image of the cells.

(2)

---

---

---

---

---

---

---

(iii) The student could not see the chromosomes inside the cells.

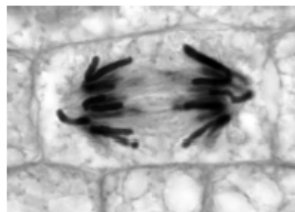
State what can be added to the root tip squash to make the chromosomes visible.

(1)

---

---

(b) Figure 2 shows a root cell in a stage of mitosis.



**Figure 2**

(i) Which stage of mitosis is shown in Figure 2?

(1)

- A** prophase
- B** metaphase
- C** anaphase
- D** telophase

(ii) Describe what is happening in Figure 2.

(3)

.....

.....

.....

.....

.....

.....

.....

.....

6 (a) A karyogram is a picture of the chromosomes found in the nucleus of a single cell.

Figure 8 shows a human karyogram.

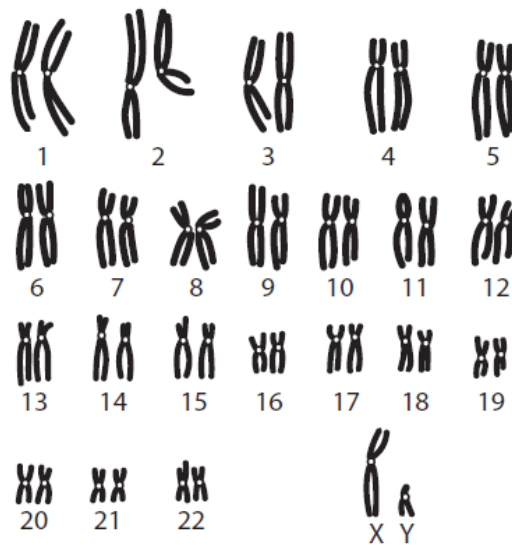


Figure 8

(i) State **two** reasons why this karyogram cannot be from a gamete (sex cell).

(2)

1.....

.....

2.....

.....

10 (a) The effect of age on focusing distance was investigated.

Volunteers of different ages had their eyes tested.

Each volunteer was asked to read words from a book. The book was moved closer to their eyes.

When the words became out of focus, the distance was recorded.

Figure 16 shows the results.

age of volunteers	distance (mm)			mean distance (mm)
	person 1	person 2	person 3	
40	256	261	257	258
45	282	275	280	279
50	292	301	297	?
55	311	309	307	309

Figure 16

(i) Calculate the mean distance for the volunteers aged 50.

Give your answer to three significant figures.

(3)

..... mm

(ii) Give **one** conclusion that can be made from the data in Figure 16.

(1)

.....  
.....

(iii) Give **two** improvements that are needed in this investigation before a valid conclusion can be made.

(2)

1.....

.....

2.....

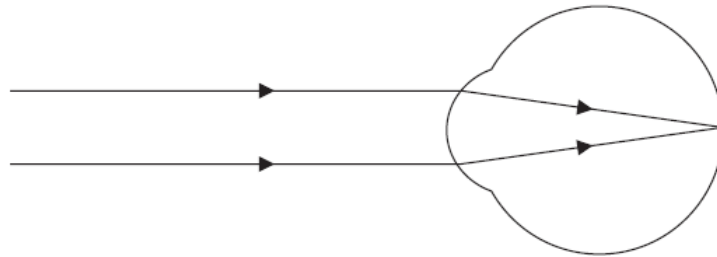
.....

(b) Which part of the eye detects coloured light?

(1)

- A iris
- B lens
- C cones
- D cornea

(c) Figure 17 shows light rays entering the eye of a person with normal vision.



**Figure 17**

(i) Describe how light rays are focused to give normal vision.

(2)

.....

.....

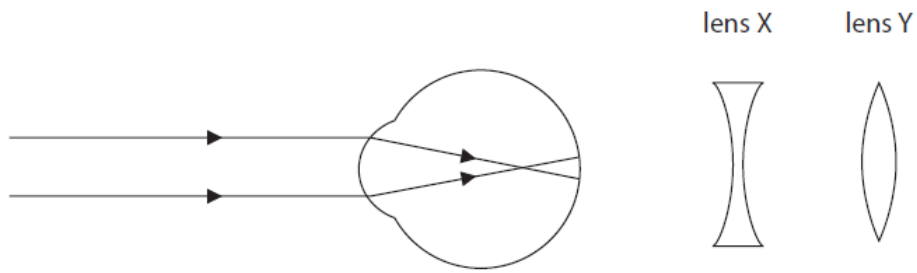
.....

.....

.....

.....

(ii) Figure 18 shows light rays entering the eye of a person with an eye defect and two lenses that can be used to correct eye defects.



**Figure 18**

Explain which lens would correct the eye defect shown in Figure 18.

(2)

.....

.....

.....

.....

.....

.....

**7** (a) (i) Which part of the eye carries impulses to the brain?

(1)

- A** cornea
- B** iris
- C** lens
- D** optic nerve

(ii) Name the structure within the eye that controls the amount of light entering the eye.

(1)

.....

(b) Explain the functions of the two types of cell in the retina that detect light.

(4)

.....

.....

.....

.....

.....

.....

.....

.....

(c) The eye can be infected by bacteria.

State the type of drug used to treat infections caused by bacteria.

(1)

.....

9 Figure 14 shows a banana plantation.



© warmer/Shutterstock

**Figure 14**

After the bananas have been harvested, the old plants are cut down.

The suckers then develop into mature plants producing the next crop of bananas.

The tip of each sucker contains a group of cells called a meristem.

(a) (i) Describe the function of a meristem in the growth of a plant.

(2)

.....

.....

.....

.....

(ii) A student took a sample of cells from a meristem to view under a light microscope.

Describe how the student would prepare a microscope slide using these cells.

(3)

.....

.....

.....

.....

.....

.....

**TOTAL = 60 MARKS**