

AS Level Biology A
H020/01 Breadth in Biology

Question Set 4

Multiple Choice Questions

1. The genetic diversity of a population can be estimated using the following formula:

$$\text{proportion of polymorphic gene loci} = \frac{\text{number of polymorphic gene loci}}{\text{total number of loci}}$$

In 1992 a study estimated the genetic diversity of four isolated populations of lions. They recorded the number of gene variants at a selection of gene loci in each population.

Which of the following populations of lions has the greatest proportion of polymorphic gene loci?

- A Asiatic Lion: 73 polymorphic loci out of 1927.
- B Transvaal Lion: 1110 polymorphic loci out of 2156.
- C Masai Lion: 1030 polymorphic loci out of 2315.
- D West African Lion: 1004 polymorphic loci out of 2008.

Your answer

[1]

2. Tropical rainforests have a very high biodiversity of plant species.

Which of the statements, **A** to **D**, is an economic benefit of high biodiversity?

- A High plant biodiversity decreases the animal biodiversity in the rainforest.
- B High plant biodiversity increases the organic matter in rainforest soils.
- C High plant biodiversity supports drug discovery and development.
- D High plant biodiversity protects the ecosystem from environmental changes.

Your answer

[1]

3. Lupus is an autoimmune disease. One symptom is a facial rash, typically in a butterfly shape across the cheeks.

Following a blood test, which of the following would indicate the patient has Lupus?

- A the presence of antibodies for the cell surface antigens of connective tissue
- B the presence of herpes antibodies
- C the presence of high levels of antihistamines
- D the absence of B lymphocytes

Your answer

[1]

4. Biologists use both phylogeny and classification to understand how different species are related.

Which of the options, **A** to **D**, is a statement about phylogeny?

- A** There are 21 species of ladybird in the UK that belong to the sub-family Coccinellinae.
- B** *Homo sapiens* and *Pan bonobo* share a common ancestor.
- C** The lily family, Liliaceae, consists of fifteen genera.
- D** The great white shark, *Carcharodon carcharias*, is a member of the class Chondrichthyes.

Your answer

[1]

5. An individual bitten by a rabid dog can be treated by an injection of human rabies antibodies.

Which option, **A** to **D**, describes the type of immunity provided by this treatment?

- A** natural passive
- B** natural active
- C** artificial passive
- D** artificial active

Your answer

[1]

6. Autoimmune diseases are often treated with a course of antibody injections.

Which of the following statements, **A** to **D**, describes the immunity arising from this treatment?

- A** active natural immunity
- B** active artificial immunity
- C** passive natural immunity
- D** passive artificial immunity

Your answer

[1]

7. Which of the following types of cells is not involved in a primary immune response?

- A T-memory cells
- B T-helper cells
- C T-killer cells
- D plasma cells

Your answer [1]

[1]

8. The Millennium Seed Bank has over two billion seeds in storage.

Which of the options, **A** to **D**, describes the type of conservation carried out at the MillenniumSeed Bank?

- A in-situ conservation of species biodiversity
- B in-situ conservation of habitat biodiversity
- C ex-situ conservation of species biodiversity
- D ex-situ conservation of habitat biodiversity

Your answer

[1]

9. Plants such as the soybean have a number of defence strategies to prevent infection by pathogens.

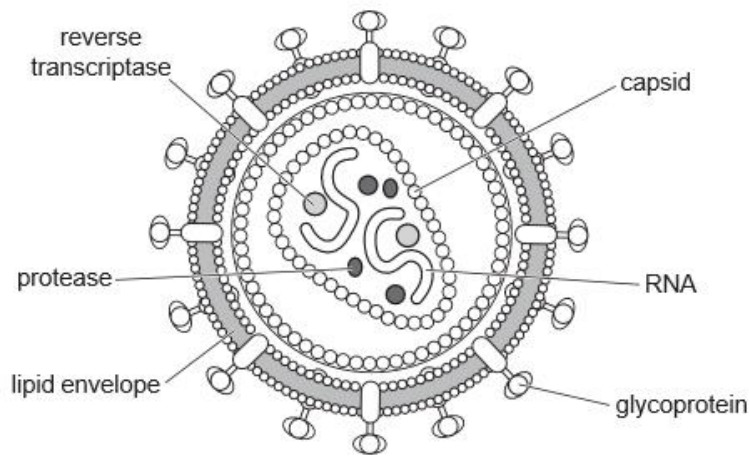
Which of the following strategies is a chemical defence against pathogen infection?

- A callose deposits at sieve tube ends that prevent pathogen movement in phloem
- B hydrolytic enzymes such as chitinase found between cells
- C stomata can be closed by guard cells if pathogens are detected
- D cell walls can be thickened by lignin, making cell entry very difficult for pathogens

Your answer

[1]

10. The diagram below shows a pathogen.



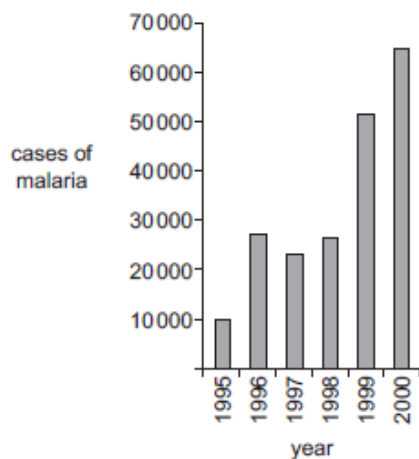
Which of the options, **A** to **D**, is the disease caused by this pathogen?

- A** HIV/AIDS
- B** potato blight
- C** ringworm
- D** tuberculosis

Your answer

[1]

11. The chart shows the number of reported cases of malaria in South Africa between 1995 and 2000.



Which of the following statements, **A** to **D**, could explain the data shown for 1999–2000?

- A** the malarial parasite had developed resistance to insecticides
- B** the vector had developed resistance to antibiotics
- C** the malarial parasite had developed resistance to antiviral drugs
- D** the vector had developed resistance to insecticides

Your answer

[1]

12. The sea marigold, *Calendula maritima*, is a rare species that is critically endangered and has been included in an *ex situ* conservation project.

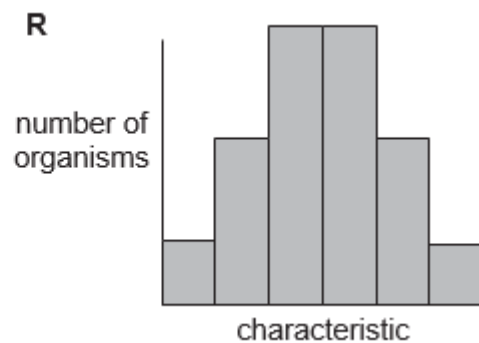
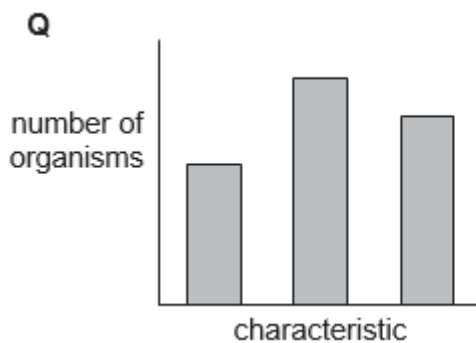
Which of the following options, **A** to **D**, is a disadvantage of conserving the sea marigold *ex situ*?

- A** it could reduce genetic diversity in sea marigolds
- B** sea marigolds are collected from the wild as seeds
- C** sea marigold seeds are stored in large numbers
- D** sea marigolds will be at risk from grazing by herbivores

Your answer

[1]

13. The two histograms represent the frequency distribution for the two different types of variation.



Which of the statements, **A** to **D**, about characteristic **Q** is correct?

- A** controlled by many genes and unaffected by the environment
- B** controlled by one or two genes and unaffected by the environment
- C** controlled by many genes and influenced by the environment
- D** controlled by one or two genes and influenced by the environment

Your answer

[1]

14. Some of the taxonomic groups for the beach sunflower, *Helianthus debilis*, are shown in the table below.

Kingdom	Plantae
Phylum	Magnoliophyta
W	Magnoliopsida
Order	Asterales
X	Asteraceae
Y	Helianthus

Which of the following rows, **A** to **D**, correctly identifies the missing taxonomic groups from the classification of *Helianthus debilis*?

	W	X	Y
A	class	genus	species
B	class	family	genus
C	family	genus	species
D	family	class	genus

Your answer

[1]

Total Marks for Question Set 4: 14

OCR

Oxford Cambridge and RSA

Copyright Information

OCR is committed to seeking permission to reproduce all third-party content that it uses in its assessment materials. OCR has attempted to identify and contact all copyright holders whose work is used in this paper. To avoid the issue of disclosure of answer-related information to candidates, all copyright acknowledgements are reproduced in the OCR Copyright Acknowledgements Booklet. This is produced for each series of examinations and is freely available to download from our public website (www.ocr.org.uk) after the live examination series.

If OCR has unwittingly failed to correctly acknowledge or clear any third-party content in this assessment material, OCR will be happy to correct its mistake at the earliest possible opportunity.

For queries or further information please contact The OCR Copyright Team, The Triangle Building, Shaftesbury Road, Cambridge CB2 8EA.

OCR is part of the Cambridge Assessment Group; Cambridge Assessment is the brand name of University of Cambridge Local Examinations Syndicate (UCLES), which is itself a department of the University of Cambridge