

A Level Biology B

H422/03 Practical skills in biology

Question Set 10

1. (a) A student was learning about the heart and circulatory system. The student dissected a heart and made a drawing of their dissection as shown in Fig. 1.1.

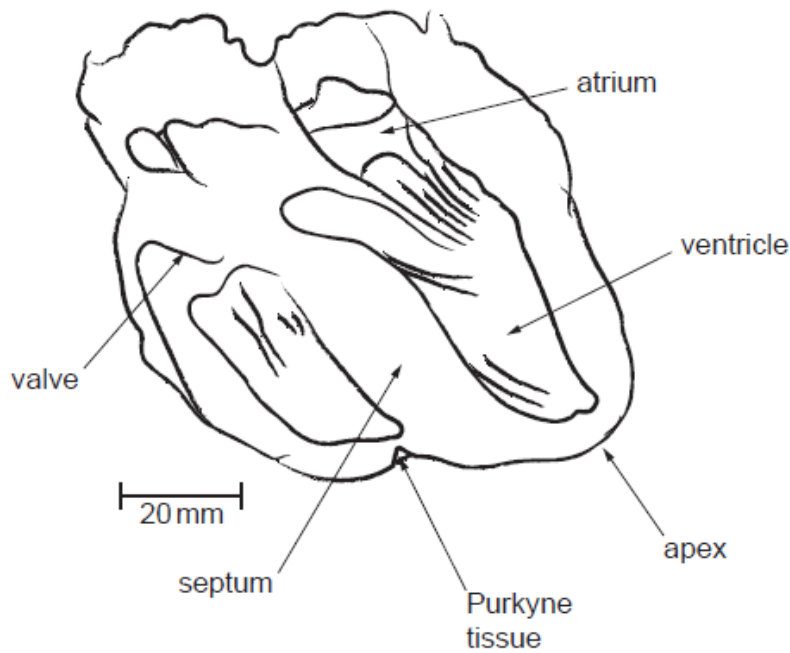


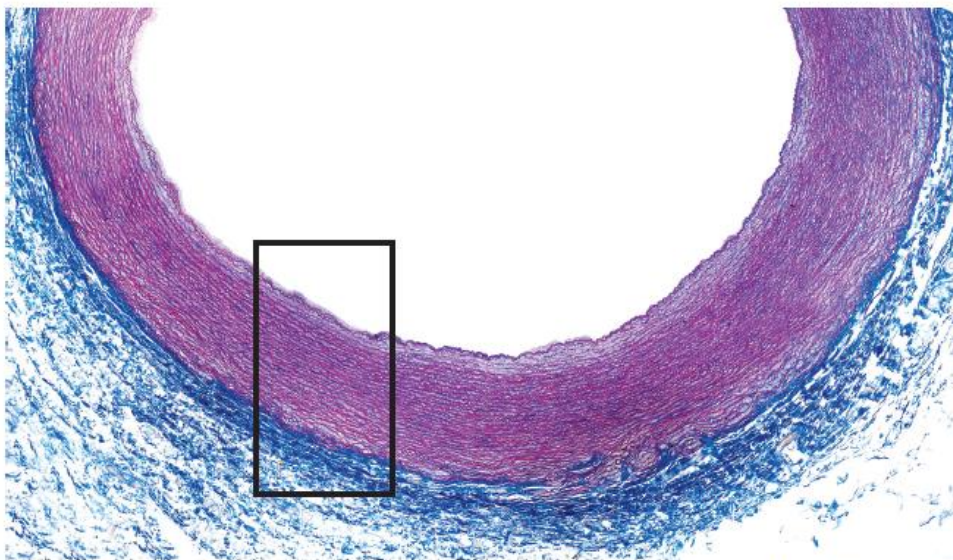
Fig.1.1

Suggest **two** improvements that could be made to the drawing in Fig. 1.1.

[2]

- (b) The student was given a microscope slide of a large artery. The image seen is shown in Fig. 1.2.

A small part of the image in Fig. 1.2 has been enclosed in a rectangle.



Magnification $\times 27$

Fig. 1.2

Using the space below, draw an annotated low power plan of the part of the artery shown within the rectangle in Fig. 1.2.

[4]

Total Marks for Question Set 10: 6

OCR

Oxford Cambridge and RSA

Copyright Information

OCR is committed to seeking permission to reproduce all third-party content that it uses in its assessment materials. OCR has attempted to identify and contact all copyright holders whose work is used in this paper. To avoid the issue of disclosure of answer-related information to candidates, all copyright acknowledgements are reproduced in the OCR Copyright Acknowledgements Booklet. This is produced for each series of examinations and is freely available to download from our public website (www.ocr.org.uk) after the live examination series.

If OCR has unwittingly failed to correctly acknowledge or clear any third-party content in this assessment material, OCR will be happy to correct its mistake at the earliest possible opportunity.

For queries or further information please contact The OCR Copyright Team, The Triangle Building, Shaftesbury Road, Cambridge CB2 8EA.

OCR is part of the Cambridge Assessment Group; Cambridge Assessment is the brand name of University of Cambridge Local Examinations Syndicate (UCLES), which is itself a department of the University of Cambridge