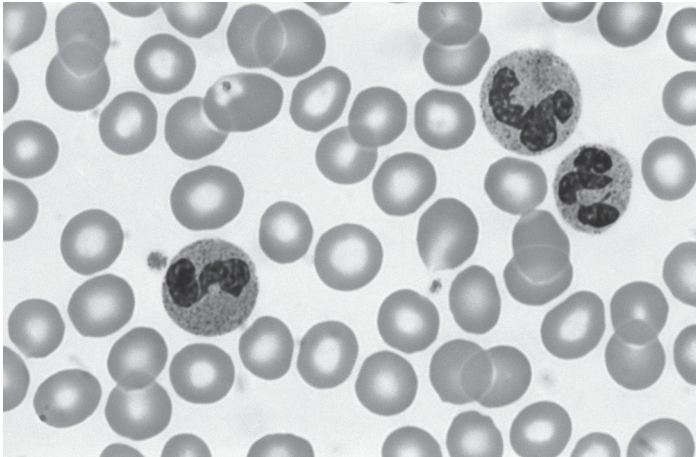


**A Level Biology A**  
**H420/02 Biological Processes**

**Question Set 22**

Multiple Choice Questions

1 The photograph below shows a blood smear.



Which row correctly lists the cells that are visible in the smear?

	erythrocytes	lymphocytes	monocytes	neutrophils
<b>A</b>	✓	x	✓	✓
<b>B</b>	✓	x	x	✓
<b>C</b>	✓	✓	✓	x
<b>D</b>	x	✓	✓	✓

Your answer

[1]

2 Which of the statements, **A** to **D**, best defines the term *species evenness*?

- A** the number of species in an area
- B** the relative abundance of each species in an area
- C** the relative number of individuals of a species in an area
- D** the spread of species over an area

Your answer

[1]

**3** Which of the options, **A to D**, is a primary defence against pathogens?

**A** antibody production

**B** clonal expansion

**C** inflammation

**D** T-killer cells

Your answer

**[1]**

**4** Three methods of pathogen transmission between animals or plants are listed below.

1 direct contact

2 vectors

3 airborne droplets

Which of the methods of pathogen transmission are common in plants?

**A** 1, 2 and 3

**B** Only 1 and 2

**C** Only 2 and 3

**D** Only 1

Your answer

**[1]**

5

The image below shows a European badger, *Meles meles*, which is a member of the family Mustelidae.



The American badger belongs to a different genus within the same family.

Which of the options, **A** to **D**, is the correct binomial name for the American badger?

- A** *Meles leucurus*
- B** *mellivora capensis*
- C** *mustelidus Everetti*
- D** *Taxidea taxus*

Your answer

[1]

6 Which of the following antibodies increase(s) the phagocytosis of pathogens?

- 1 opsonins
- 2 agglutinins
- 3 anti-toxins

- A 1, 2 and 3
- B Only 1 and 2
- C Only 2 and 3
- D Only 1

Your answer

[1]

7 Which of the following describes an autoimmune disease?

- A a disease in which an individual's own body cells are antigenic
- B a disease in which a pathogen attacks cells of the immune system
- C a disease that prevents production of antibodies
- D a disease to which an individual has developed immunity

Your answer

[1]

8 Turtle doves, *Streptopelia turtur*, were once common in farmland in the UK but their numbers have recently been in decline.

Farmers can claim money from the UK government if they farm in ways that encourage the survival of species such as the turtle dove.

Which of the following agreements is/are relevant to the example described above?

- 1 The Convention on International Trade in Endangered Species (CITES)
- 2 The Rio Convention on Biological Diversity (CBD)
- 3 The Countryside Stewardship Scheme (CSS)

- A 1, 2 and 3
- B Only 1 and 2
- C Only 2 and 3
- D Only 1

Your answer

[1]

9 Which of the following is most likely to increase biodiversity?

- A captive breeding programmes
- B climate change
- C human population growth
- D monoculture

Your answer

[1]

10 Biodiversity is important for the development of new medicines.

Which of the following statements about the development of new medicines is **incorrect**?

- A Computer modelling can be used to identify useful medicinal compounds.
- B Genetically modified bacteria can be used to synthesise medicines.
- C Many pathogenic bacteria have become immune to antibiotics.
- D Microorganisms are an important source of new medicines.

Your answer

[1]

11 Which of the following is/are **not** involved in the primary response against infection?

- A memory B-cells
- B mast cells
- C mitosis
- D platelets

Your answer

[1]

**Total Marks for Question Set 22: 11**

---

# OCR

Oxford Cambridge and RSA

## **Copyright Information**

OCR is committed to seeking permission to reproduce all third-party content that it uses in its assessment materials. OCR has attempted to identify and contact all copyright holders whose work is used in this paper. To avoid the issue of disclosure of answer-related information to candidates, all copyright acknowledgements are reproduced in the OCR Copyright Acknowledgements Booklet. This is produced for each series of examinations and is freely available to download from our public website ([www.ocr.org.uk](http://www.ocr.org.uk)) after the live examination series.

If OCR has unwittingly failed to correctly acknowledge or clear any third-party content in this assessment material, OCR will be happy to correct its mistake at the earliest possible opportunity.

For queries or further information please contact The OCR Copyright Team, The Triangle Building, Shaftesbury Road, Cambridge CB2 8EA.

OCR is part of the Cambridge Assessment Group; Cambridge Assessment is the brand name of University of Cambridge Local Examinations Syndicate (UCLES), which is itself a department of the University of Cambridge