

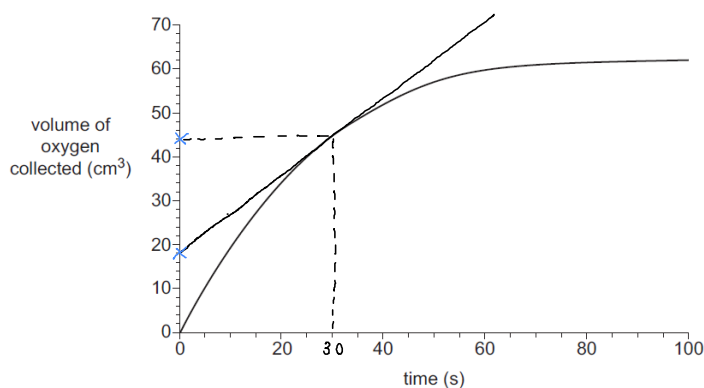
A Level Biology A
H420/02 Biological Processes

Question Set 20

Multiple Choice Questions

1. Celery contains the enzyme catalase, which breaks down hydrogen peroxide into oxygen and water.

A student added liquidised celery to a solution of hydrogen peroxide and collected the oxygen given off by the reaction. The results are shown in the graph below.



Which of the following shows the rate of reaction at 30s?

- A $0.85 \text{ cm}^3 \text{ s}^{-1}$ $\approx \frac{44 - 18}{30} = 0.867$
B $1.00 \text{ cm}^3 \text{ s}^{-1}$
C $1.15 \text{ cm}^3 \text{ s}^{-1}$
D $1.50 \text{ cm}^3 \text{ s}^{-1}$

Your answer

A

[1]

Total Marks for Question Set 20: 1

OCR

Oxford Cambridge and RSA

Copyright Information

OCR is committed to seeking permission to reproduce all third-party content that it uses in its assessment materials. OCR has attempted to identify and contact all copyright holders whose work is used in this paper. To avoid the issue of disclosure of answer-related information to candidates, all copyright acknowledgements are reproduced in the OCR Copyright Acknowledgements Booklet. This is produced for each series of examinations and is freely available to download from our public website (www.ocr.org.uk) after the live examination series.

If OCR has unwittingly failed to correctly acknowledge or clear any third-party content in this assessment material, OCR will be happy to correct its mistake at the earliest possible opportunity.

For queries or further information please contact The OCR Copyright Team, The Triangle Building, Shaftesbury Road, Cambridge CB2 8EA.

OCR is part of the Cambridge Assessment Group; Cambridge Assessment is the brand name of University of Cambridge Local Examinations Syndicate (UCLES), which is itself a department of the University of Cambridge