

**A Level Biology A**  
**H420/02 Biological Diversity**

**Question Set 19**

1 Lipids are an important group of biological molecules.

(a) Lipoproteins are roughly-spherical structures that transport lipids in the blood.

Fig. 21 shows a simplified drawing of a section from the widest part of a lipoprotein.

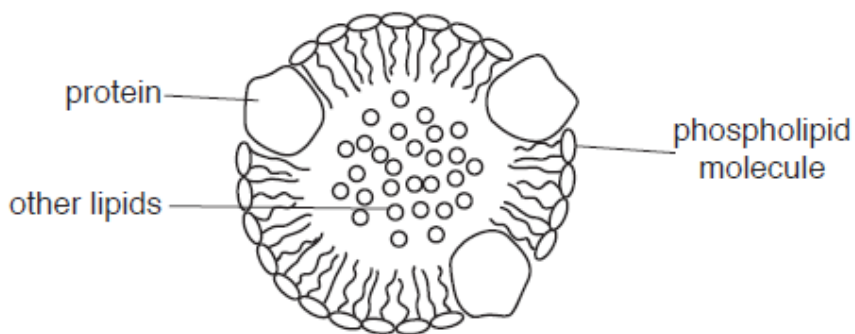


Fig. 21

(i) Calculate the number of phospholipid molecules in the outer surface of the lipoprotein shown in Fig. 21.

Assume that the pattern of proteins and phospholipids shown in Fig. 21 is continued across the whole surface of the lipoprotein.

Use the formula: Surface area of sphere =  $4\pi r^2$

number of phospholipid molecules = .....

[2]

(ii) Lipoproteins with fewer phospholipids and more protein in the outer layer are known as high density lipoproteins.

Lipoproteins with a larger number of phospholipids but less protein are known as low density lipoproteins.

Use this information to explain why lipids can increase the buoyancy of aquatic animals.

[1]

(b) Complete the passage by choosing the most appropriate word from the list.

**bile      carbon      hydrogen      insoluble**  
**nitrogen      oxygen      permeability      production      solid**  
**soluble      stability      storage      vitamins**

Lipids have many roles in living organisms. Some are used for energy  
..... in adipose cells. Unsaturated fatty acids contain at least  
one double bond between two ..... atoms and so contain  
fewer ..... atoms. All lipids are ..... in water  
so need to be transported in the blood by lipoproteins. Cholesterol  
molecules increase the ..... of membranes, and cholesterol is  
also used to synthesise steroid hormones and .....

[6]

(c) Triglycerides are a type of lipid molecule that can be broken down during hydrolysis reactions.

Using the structure of triglyceride molecules as an example, explain what is meant by hydrolysis.

[2]

**Total Marks for Question Set 19: 11**

---

# OCR

Oxford Cambridge and RSA

## **Copyright Information**

OCR is committed to seeking permission to reproduce all third-party content that it uses in its assessment materials. OCR has attempted to identify and contact all copyright holders whose work is used in this paper. To avoid the issue of disclosure of answer-related information to candidates, all copyright acknowledgements are reproduced in the OCR Copyright Acknowledgements Booklet. This is produced for each series of examinations and is freely available to download from our public website ([www.ocr.org.uk](http://www.ocr.org.uk)) after the live examination series.

If OCR has unwittingly failed to correctly acknowledge or clear any third-party content in this assessment material, OCR will be happy to correct its mistake at the earliest possible opportunity.

For queries or further information please contact The OCR Copyright Team, The Triangle Building, Shaftesbury Road, Cambridge CB2 8EA.

OCR is part of the Cambridge Assessment Group; Cambridge Assessment is the brand name of University of Cambridge Local Examinations Syndicate (UCLES), which is itself a department of the University of Cambridge