

A Level Biology A
H420/01 Biological Processes

Question Set 7

7 (a)

Fig. 22.1 is a cross section of part of the cortex of a mammalian kidney.

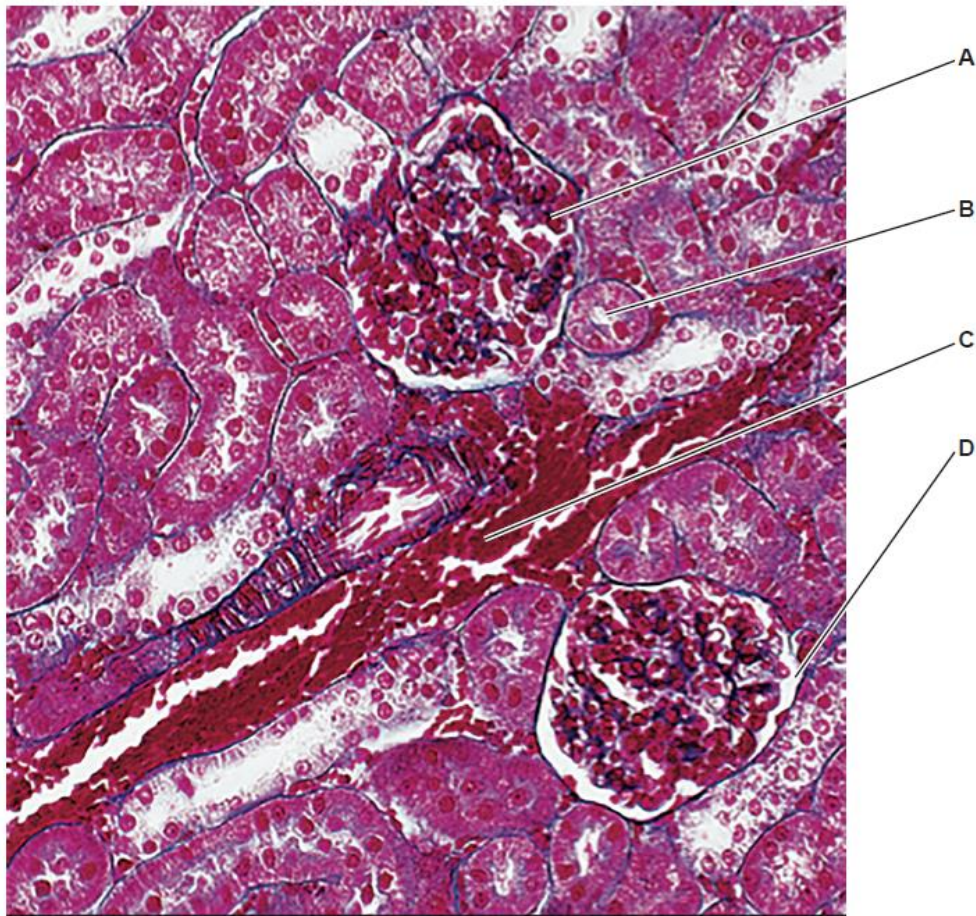


Fig. 22.1

(i) Which **two** letters identify regions that **do not** contain plasma proteins? [1]
B, D

(ii) Which letter identifies the region with the highest hydrostatic pressure? [1]
A

7 (b) (i) Studies of the cell surface membranes of the **distal** convoluted tubule have provided the following evidence:

- Sodium-potassium pumps:
 - move potassium ions from the blood to the tubule fluid
 - move sodium ions from the tubule fluid to the blood
 - use ATP in these processes.
- Sodium-calcium co-transport proteins:
 - move calcium ions from the tubule fluid to the blood
 - move sodium ions into the tubule fluid
 - use the electrochemical gradient of sodium ions to drive this process.

Using this information and your own knowledge, compare the processes occurring in the **proximal** and **distal** convoluted tubules. [3]

Processes in both the PCT and DCT involve active transport, co-transport and selective reabsorption. However, whilst in the DCT co-transport involves ions only, in the PCT, co-transport of glucose, amino acids and ions occurs.

- 7 (b) (ii) Nephrogenic diabetes insipidus is a disease of the kidney that affects the regulation of water potential in the blood. One cause is lithium poisoning. Lithium ions enter the kidney tubules through sodium channels.

This prevents the cells of the collecting duct from responding to ADH in the blood.

State and explain **one** symptom you would expect to observe as a result of nephrogenic diabetes insipidus. [2]

Increased thirst response. The cells of the collecting duct cannot respond to ADH so fewer aquaporins are inserted into the plasma membrane of cells in the collecting duct wall. Less water is reabsorbed from the collecting duct so more water is lost in urine.

- 7 (c) (i) Fig. 22.2 shows a podocyte from the kidney. The many gaps between the microscopic processes form fenestrations in the Bowman's capsule.



Fig. 22.2

Suggest and explain why podocytes are usually unable to undergo mitosis. [3]

They have already differentiated and become specialised so cannot undergo mitosis. If mitosis did occur, it would alter the architecture of their cytoskeleton and subsequently change their shape. The number, size and shape of the filtration slits would change, altering the size of molecules that could pass into the Bowman's capsule during ultrafiltration

- 7 (c) (ii) Studies show that after damage by infection or injury, it is possible for nephron tissues to be regenerated. Adult stem cells are involved in this process.

State **two** properties of adult stem cells that make them suitable for regeneration of tissues in the kidney? [2]

Adult stem cells are multipotent. They can divide indefinitely and differentiate into all cell types of the kidney, regenerating whole tissues from a few cells.

Total Marks for Question Set 7: 12

OCR

Oxford Cambridge and RSA

Copyright Information

OCR is committed to seeking permission to reproduce all third-party content that it uses in its assessment materials. OCR has attempted to identify and contact all copyright holders whose work is used in this paper. To avoid the issue of disclosure of answer-related information to candidates, all copyright acknowledgements are reproduced in the OCR Copyright Acknowledgements Booklet. This is produced for each series of examinations and is freely available to download from our public website (www.ocr.org.uk) after the live examination series.

If OCR has unwittingly failed to correctly acknowledge or clear any third-party content in this assessment material, OCR will be happy to correct its mistake at the earliest possible opportunity.

For queries or further information please contact The OCR Copyright Team, The Triangle Building, Shaftesbury Road, Cambridge CB2 8EA.

OCR is part of the Cambridge Assessment Group; Cambridge Assessment is the brand name of University of Cambridge Local Examinations Syndicate (UCLES), which is itself a department of the University of Cambridge