

**A Level Biology A**  
**H420/01 Biological Processes**

**Question Set 2**

2 (a) (i) Cirrhosis of the liver can result from long-term liver damage. Alcohol or other toxins can cause this damage.

Scientists have suggested that cirrhosis can be detected by taking samples of body fluids and testing them for two different molecules: C-reactive protein and copeptin.

The liver produces these two molecules, and increased levels can indicate liver damage due to cirrhosis.

Different bodily fluids from a patient suspected of having cirrhosis were tested for C-reactive protein and copeptin.

Fig. 17.1 is a graph of the results.

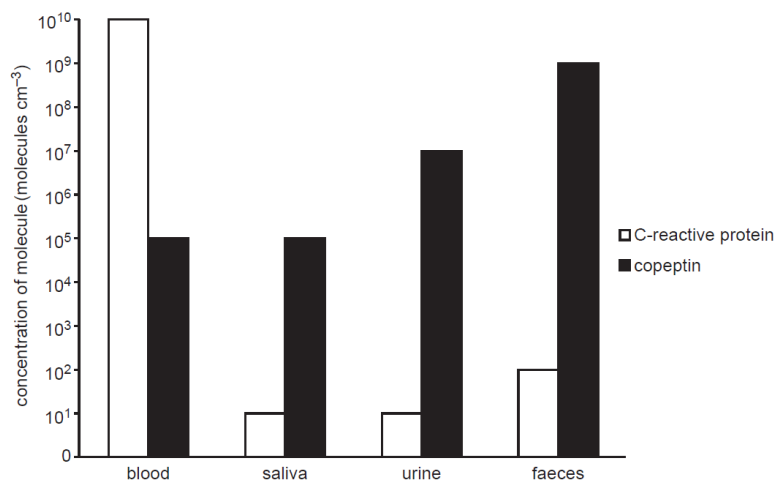


Fig. 17.1

Different bodily fluids have different concentrations of the different molecules.

Calculate the order of magnitude by which concentration of copeptin in the **faeces** is higher than the concentration of C-reactive protein in the **saliva**.

Show your working.

Answer = .....molecules cm<sup>-3</sup> [2]

- 2 (a) (ii) Cirrhosis of the liver can result from long-term liver damage. Alcohol or other toxins can cause this damage.

Scientists have suggested that cirrhosis can be detected by taking samples of body fluids and testing them for two different molecules: C-reactive protein and copeptin.

The liver produces these two molecules, and increased levels can indicate liver damage due to cirrhosis.

Different bodily fluids from a patient suspected of having cirrhosis were tested for C-reactive protein and copeptin.

Fig. 17.1 is a graph of the results.

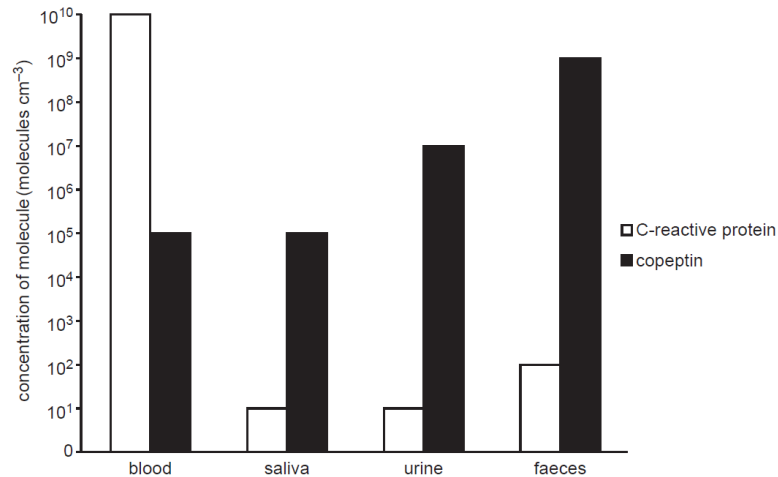


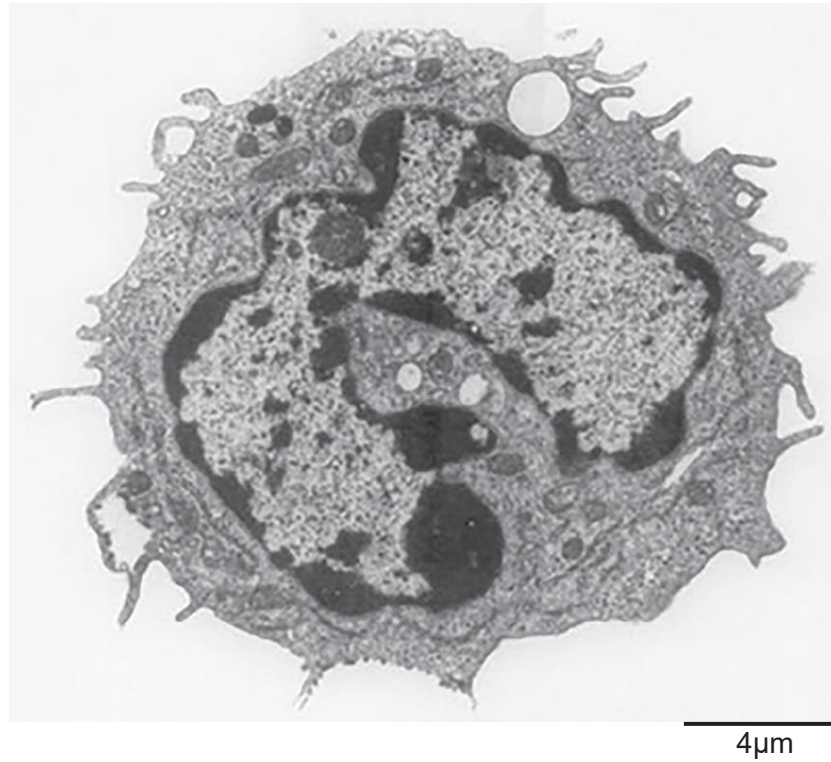
Fig. 17.1

Different bodily fluids have different concentrations of the different molecules.

Suggest why blood and faeces have the highest concentrations of C-reactive protein and copeptin.

[2]

2 (b) (i) Fig. 17.2 is an image of a Kupffer cell from the liver.



**Fig. 17.2**

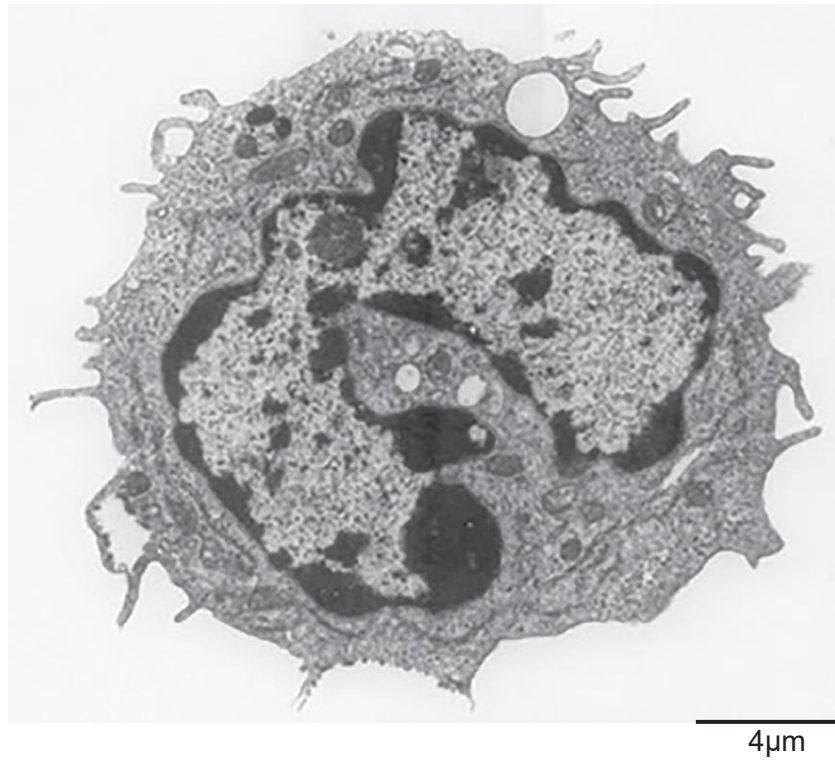
The diameter of the Kupffer cell in the image is 9.1  $\mu\text{m}$ . Assuming it is spherical, calculate the actual volume of this cell.

Give your answer to **four** significant figures. Show your working.

Volume = .....

**[3]**

2 (b) (ii) Fig. 17.2 is an image of a Kupffer cell from the liver.



**Fig. 17.2**

Which type of microscope has been used to obtain this image? Explain your answer.

**[2]**

**Total Marks for Question Set 2: 9**

---

# OCR

Oxford Cambridge and RSA

## **Copyright Information**

OCR is committed to seeking permission to reproduce all third-party content that it uses in its assessment materials. OCR has attempted to identify and contact all copyright holders whose work is used in this paper. To avoid the issue of disclosure of answer-related information to candidates, all copyright acknowledgements are reproduced in the OCR Copyright Acknowledgements Booklet. This is produced for each series of examinations and is freely available to download from our public website ([www.ocr.org.uk](http://www.ocr.org.uk)) after the live examination series.

If OCR has unwittingly failed to correctly acknowledge or clear any third-party content in this assessment material, OCR will be happy to correct its mistake at the earliest possible opportunity.

For queries or further information please contact The OCR Copyright Team, The Triangle Building, Shaftesbury Road, Cambridge CB2 8EA.

OCR is part of the Cambridge Assessment Group; Cambridge Assessment is the brand name of University of Cambridge Local Examinations Syndicate (UCLES), which is itself a department of the University of Cambridge