

A Level Biology A
H420/01 Biological Processes

Question Set 1

1. (a) (i) Many insects such as moths and bumblebees are insulated with scales and hair, and are known as facultative endotherms.

Their metabolism during flight can cause the temperature of the flight muscles to increase 20–30 °C above the external temperature.

Using the information provided, explain why many moths and bumblebees are described as endothermic.

[1]

- 1 (a) (ii) Many insects such as moths and bumblebees are insulated with scales and hair, and are known as facultative endotherms.

Their metabolism during flight can cause the temperature of the flight muscles to increase 20–30 °C above the external temperature.

It is more difficult for moths and bumblebees to maintain their body temperature than for mammals and birds to maintain their body temperature.

Explain why.

[2]

- 1 (b) (i) When walking, the abdomen of caterpillars expands and contracts slowly. Air is taken into the tiny holes along the side of the body.

One of these holes is labelled in Fig. 16.



Fig. 16

Name these holes.

[1]

- 1 (b) (ii) When walking, the abdomen of caterpillars expands and contracts slowly. Air is taken into the tiny holes along the side of the body.

One of these holes is labelled in Fig. 16.

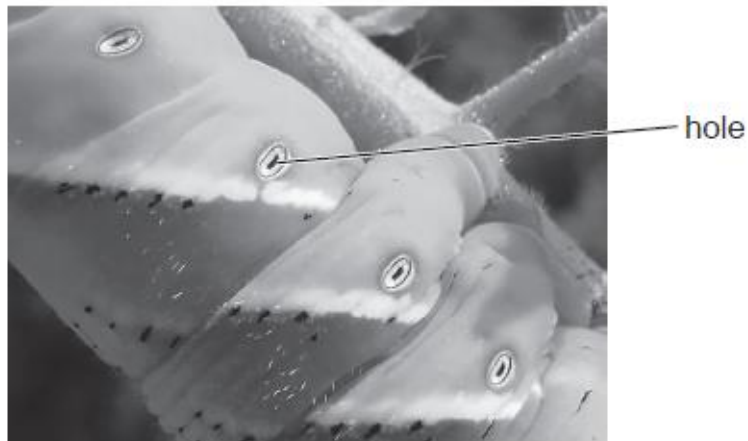


Fig. 16

Fluid is found in the tubes responsible for gaseous exchange in insects.

Name this fluid.

- 1 (c) Outline the reasons why insects and other animals need well-developed transport systems

[1]

- 1 (d) A student planned to carry out a dissection of insect and fish gaseous exchange systems.

[3]

The student planned to complete diagrams of the different tissues. They were advised to observe the following guidelines:

- use a sharp pencil
- use ruled label lines
- include a scale bar.

Suggest **two** further guidelines for the student to follow to ensure they present their diagrams clearly and accurately.

[2]

Total Marks for Question Set 1: 10

OCR

Oxford Cambridge and RSA

Copyright Information

OCR is committed to seeking permission to reproduce all third-party content that it uses in its assessment materials. OCR has attempted to identify and contact all copyright holders whose work is used in this paper. To avoid the issue of disclosure of answer-related information to candidates, all copyright acknowledgements are reproduced in the OCR Copyright Acknowledgements Booklet. This is produced for each series of examinations and is freely available to download from our public website (www.ocr.org.uk) after the live examination series.

If OCR has unwittingly failed to correctly acknowledge or clear any third-party content in this assessment material, OCR will be happy to correct its mistake at the earliest possible opportunity.

For queries or further information please contact The OCR Copyright Team, The Triangle Building, Shaftesbury Road, Cambridge CB2 8EA.

OCR is part of the Cambridge Assessment Group; Cambridge Assessment is the brand name of University of Cambridge Local Examinations Syndicate (UCLES), which is itself a department of the University of Cambridge