

Centre No.						Paper Reference					Surname	Initial(s)		
Candidate No.						6	6	6	5	/	0	1	Signature	

Paper Reference(s)
6665/01

Edexcel GCE

Core Mathematics C3

Advanced

Thursday 15 January 2009 – Morning
 Time: 1 hour 30 minutes

Examiner's use only		
Team Leader's use only		

Materials required for examination Items included with question papers
 Mathematical Formulae (Green) Nil

Candidates may use any calculator allowed by the regulations of the Joint Council for Qualifications. Calculators must not have the facility for symbolic algebra manipulation, differentiation and integration, or have retrievable mathematical formulae stored in them.

Question Number	Leave Blank
1	
2	
3	
4	
5	
6	
7	
8	
Total	

Instructions to Candidates

In the boxes above, write your centre number, candidate number, your surname, initials and signature. Check that you have the correct question paper. Answer ALL the questions. You must write your answer for each question in the space following the question. When a calculator is used, the answer should be given to an appropriate degree of accuracy.

Information for Candidates

A booklet 'Mathematical Formulae and Statistical Tables' is provided. Full marks may be obtained for answers to ALL questions. The marks for individual questions and the parts of questions are shown in round brackets: e.g. (2). There are 8 questions in this question paper. The total mark for this paper is 75. There are 28 pages in this question paper. Any blank pages are indicated.

Advice to Candidates

You must ensure that your answers to parts of questions are clearly labelled. You should show sufficient working to make your methods clear to the Examiner. Answers without working may not gain full credit.

This publication may be reproduced only in accordance with Edexcel Limited copyright policy.
 ©2009 Edexcel Limited.



Leave blank

1. (a) Find the value of $\frac{dy}{dx}$ at the point where $x = 2$ on the curve with equation

$$y = x^2\sqrt{5x - 1}.$$

(6)

(b) Differentiate $\frac{\sin 2x}{x^2}$ with respect to x .

(4)



3.

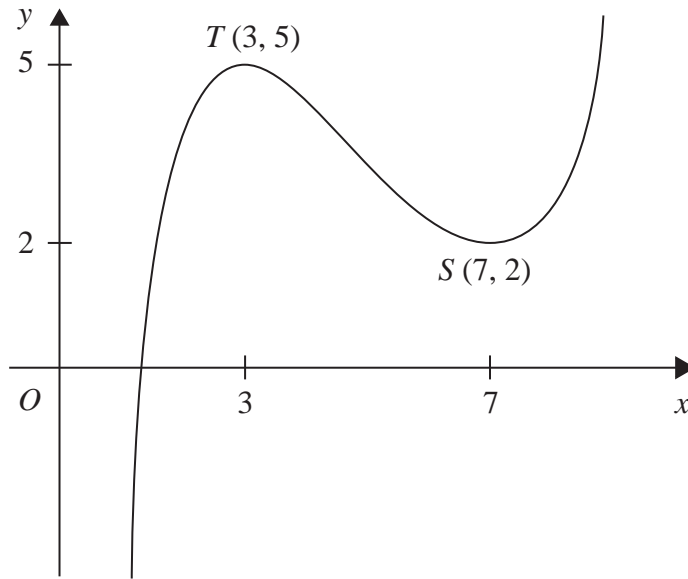


Figure 1

Figure 1 shows the graph of $y = f(x)$, $1 < x < 9$.
The points $T(3, 5)$ and $S(7, 2)$ are turning points on the graph.

Sketch, on separate diagrams, the graphs of

(a) $y = 2f(x) - 4$, (3)

(b) $y = |f(x)|$. (3)

Indicate on each diagram the coordinates of any turning points on your sketch.



5. The functions f and g are defined by

$$f : x \mapsto 3x + \ln x, \quad x > 0, \quad x \in \mathbb{R}$$

$$g : x \mapsto e^{x^2}, \quad x \in \mathbb{R}$$

(a) Write down the range of g . (1)

(b) Show that the composite function fg is defined by

$$fg : x \mapsto x^2 + 3e^{x^2}, \quad x \in \mathbb{R}.$$
 (2)

(c) Write down the range of fg . (1)

(d) Solve the equation $\frac{d}{dx}[fg(x)] = x(xe^{x^2} + 2)$. (6)



Leave
blank

Question 6 continued

Lined area for writing the answer to Question 6.



H 3 1 1 2 3 A 0 1 7 2 8

7. $f(x) = 3xe^x - 1$

The curve with equation $y = f(x)$ has a turning point P .

- (a) Find the exact coordinates of P . (5)

The equation $f(x) = 0$ has a root between $x = 0.25$ and $x = 0.3$

- (b) Use the iterative formula

$$x_{n+1} = \frac{1}{3}e^{-x_n}$$

with $x_0 = 0.25$ to find, to 4 decimal places, the values of x_1, x_2 and x_3 . (3)

- (c) By choosing a suitable interval, show that a root of $f(x) = 0$ is $x = 0.2576$ correct to 4 decimal places. (3)



Leave blank

8. (a) Express $3 \cos \theta + 4 \sin \theta$ in the form $R \cos(\theta - \alpha)$, where R and α are constants, $R > 0$ and $0 < \alpha < 90^\circ$.

(4)

(b) Hence find the maximum value of $3 \cos \theta + 4 \sin \theta$ and the smallest positive value of θ for which this maximum occurs.

(3)

The temperature, $f(t)$, of a warehouse is modelled using the equation

$$f(t) = 10 + 3 \cos(15t)^\circ + 4 \sin(15t)^\circ,$$

where t is the time in hours from midday and $0 \leq t < 24$.

(c) Calculate the minimum temperature of the warehouse as given by this model.

(2)

(d) Find the value of t when this minimum temperature occurs.

(3)



Leave
blank

Question 8 continued

Horizontal ruling lines for writing the answer to Question 8.

Q8

(Total 12 marks)

TOTAL FOR PAPER: 75 MARKS

END

