

OCR

Oxford Cambridge and RSA

Tuesday 7 June 2016 – Afternoon

AS GCE BIOLOGY**F212/01** Molecules, Biodiversity, Food and Health

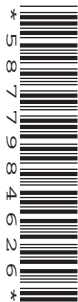
Candidates answer on the Question Paper.

OCR supplied materials:

None

Other materials required:

- Electronic calculator
- Ruler (cm/mm)

Duration: 1 hour 45 minutes


Candidate forename		Candidate surname	
-----------------------	--	----------------------	--

Centre number						Candidate number				
---------------	--	--	--	--	--	------------------	--	--	--	--

INSTRUCTIONS TO CANDIDATES

- Write your name, centre number and candidate number in the boxes above. Please write clearly and in capital letters.
- Use black ink. HB pencil may be used for graphs and diagrams only.
- Answer **all** the questions.
- Read each question carefully. Make sure you know what you have to do before starting your answer.
- Write your answer to each question in the space provided. If additional space is required, you should use the lined pages at the end of this booklet. The question number(s) must be clearly shown.
- Do **not** write in the bar codes.

INFORMATION FOR CANDIDATES

- The number of marks is given in brackets [] at the end of each question or part question.
- The total number of marks for this paper is **100**.
-  Where you see this icon, you will be awarded marks for the quality of written communication in your answer.
- You may use an electronic calculator.
- You are advised to show all the steps in any calculations.
- This document consists of **24** pages. Any blank pages are indicated.

2

Answer **all** the questions.

1 In cells, glucose can exist as α -glucose or as β -glucose.

(a) Fig. 1.1 represents the structural formula of a molecule of α -glucose.

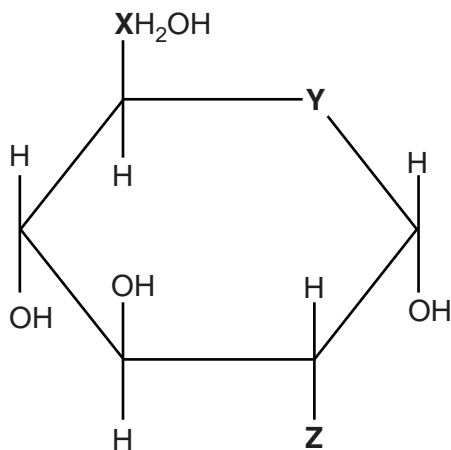


Fig. 1.1

(i) In Fig. 1.1 some atoms or groups have been replaced by the letters **X**, **Y** and **Z**.

Identify the correct atom or group that has been replaced by each letter.

X

Y

Z

[3]

(ii) Describe how the structure drawn in Fig. 1.1 above would be different if it represented a molecule of **β -glucose**.

.....

..... [2]

4

- (c) Alpha (α) and beta (β) are prefixes that are frequently used to describe a range of biological molecules, such as α -glucose and β -glucose.

The prefixes α and β can also be used when describing protein structure.

Complete the following statements about proteins using the most appropriate terms.

- The secondary structure of a protein may contain many regions folded in zig-zag patterns known as
- The secondary structure of a protein is determined by the arrangement of bonds, which stabilise the structure.
- The structure of collagen is described as a left-handed helix because of the direction in which the polypeptide twists.
- Polypeptides known as alpha (α) and beta (β) form part of the structure of haemoglobin. [5]

[Total: 19]

5

2 Influenza (flu) is a disease that affects millions of people worldwide. Many vulnerable people receive vaccinations against flu each year.

(a) A flu vaccination consists of a suspension of antigenic material from the flu virus, which is then injected into patients.

Tick the box that best describes the type of immunity provided by the flu vaccination.

active and natural	<input type="checkbox"/>
active and artificial	<input type="checkbox"/>
passive and natural	<input type="checkbox"/>
passive and artificial	<input type="checkbox"/>

[1]

(b) Fig. 2.1 represents an influenza virus. Various protein antigens are attached to the outer surface of the virus.

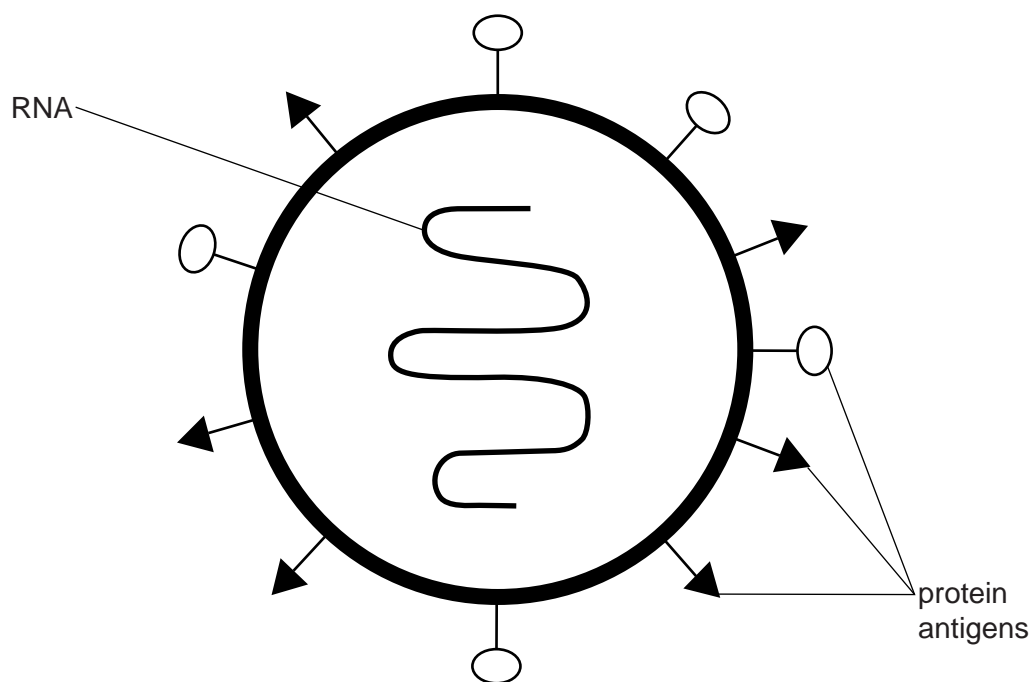


Fig. 2.1

When a virus infects a human host, it causes the host's cells to produce many new copies of the virus.

7

(c) Compare the primary and secondary immune response by filling in the table below.

	Primary response	Secondary response
Relative concentration of antibodies produced		
Relative duration of response		

[2]

(d) Name **two different** types of T-lymphocytes **and** describe their roles in the immune response.

1

.....

2

.....

[2]

[Total: 11]

8

3 Enzymes are important molecules in living organisms.

(a) (i) A student decided to use the biuret test to detect the presence of enzyme in a solution.

Outline the procedure the student should follow in order to detect the presence of enzyme in a solution using the biuret test.

.....

 [2]

(ii) State why the structure of enzyme molecules allows them to be detected **in solution** using the biuret test.

.....
 [1]

(b) The student wished to determine the mass of enzyme in 250cm^3 of an enzyme solution of unknown concentration.

To determine the concentration of this enzyme solution, the student first carried out the biuret test on three enzyme solutions of known concentration:

- solution 1 0.5 mg cm^{-3} of enzyme
- solution 2 1.0 mg cm^{-3} of enzyme
- solution 3 2.0 mg cm^{-3} of enzyme

After completing the biuret tests, the absorbance of light by each solution was measured using a colorimeter. The student plotted a graph of the results. The graph is shown in Fig. 3.1.

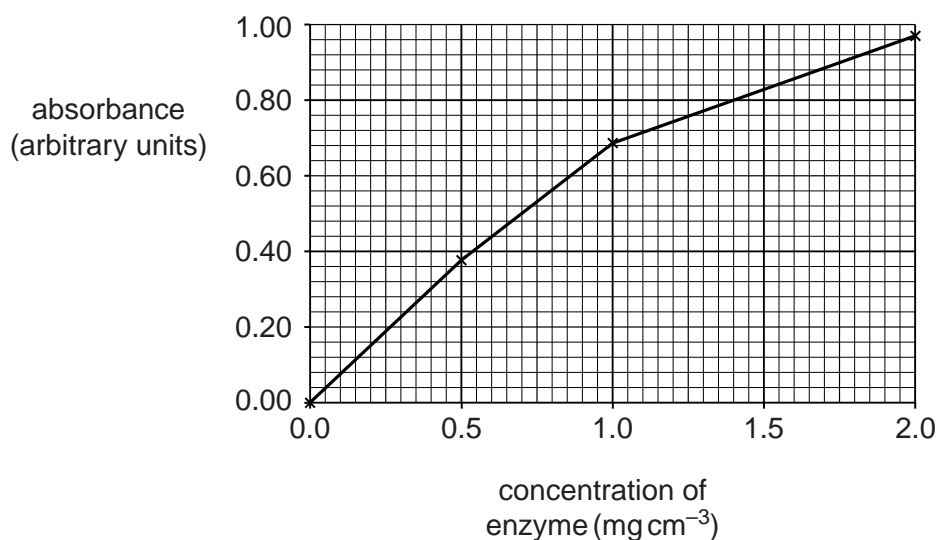


Fig. 3.1

9

- (i) The student then carried out the same procedure on the enzyme solution of unknown concentration.

The absorbance reading on the colorimeter was 0.8 arbitrary units.

Using the line drawn by the student in Fig. 3.1, determine the concentration of the enzyme solution.

Concentration = mg cm^{-3}

Calculate the **mass** of enzyme, **in grams**, in 250 cm^3 of the enzyme solution. Show your working. Give your answer to **two** decimal places.

Answer = g [2]

- (ii) The student performed the calculation correctly. However, the teacher said that the value for the mass of enzyme given by the student was inaccurate.

Explain how the student's **method** could be improved to increase the accuracy of this value.

.....

 [2]

- (iii) Outline the practical procedures the student would have taken to generate the point on the graph at the origin (0.0, 0.00).

.....

 [2]

4 *Nymphaea thermarum* is the world's smallest and most endangered water lily. It was first discovered by scientists in central Africa, in 1987. It has not been seen in the wild since 2008 and is only known to exist in a few botanic gardens.

(a) *N. thermarum* is the only lily that grows in damp mud rather than water.

The site where it was originally discovered has not been directly affected by the activities of humans in the local area.

Suggest why *N. thermarum* is no longer found in the area where it was first discovered.

.....
.....
.....
..... [2]

(b) Botanic gardens collect plant species from around the world to maintain biodiversity.

(i) State two levels at which biodiversity may be considered.

1
.....
2
..... [2]

(ii) State **one** benefit to human health of maintaining plant biodiversity.

.....
..... [1]

(iii) Explain the benefits to agriculture of maintaining plant biodiversity.

.....
.....
.....
.....
.....
..... [3]

6 Six major groups of organisms are listed below:

animals	bacteria	plants
archaea	fungi	protocists

(a) A teacher constructed a **dichotomous key** to help her students distinguish between each of these groups.

The key consisted of a series of questions with 'yes' or 'no' answers.

(i) The first question is shown in the box below. Complete the key by choosing the correct answer from the groups of organisms listed.

Question 1: Does the organism have walls made of chitin?

Yes =

No go to question 2

[1]

(ii) Write a question in the box below to distinguish plants and protocists from the remaining groups of organisms.

Question 2:

.....

Yes = plants or protocists

No go to question 3

[1]

(iii) Write a question in the box below to distinguish the archaea and bacteria from animals.

Question 3:

.....

Yes = animals

No archaea or bacteria

[1]

(b) (i) Fig. 6.1 is a diagram representing the taxonomic hierarchy of organisms within the animal kingdom.

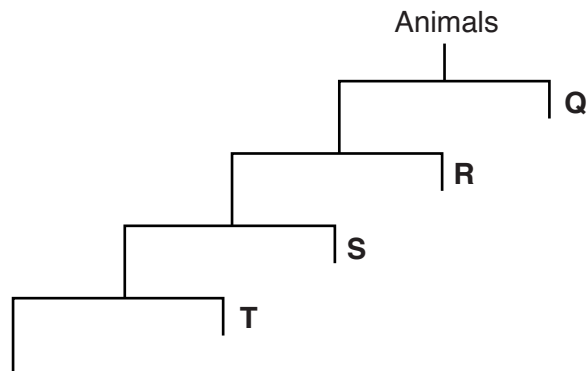


Fig. 6.1

State the level of taxonomic group represented by the letters **Q**, **R**, **S** and **T**.

- Q**
- R**
- S**
- T** [2]

(ii) Fig. 6.2 shows a diagram representing the phylogenies of some groups of organisms.

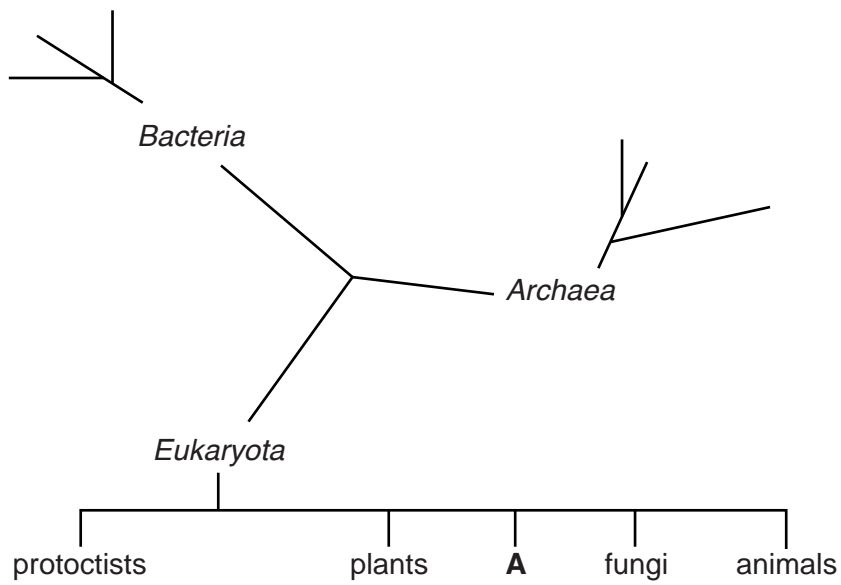


Fig. 6.2

The letter 'A' on Fig. 6.2 represents a group of organisms called slime moulds.

With reference to Fig. 6.2, discuss the **classification** of slime moulds and include the range of evidence on which this classification might be based.

.....

.....

.....

.....

..... [3]

(iii) State **three** reasons why the three-domain classification system is now used in preference to the five-kingdom system.

1

.....

2

.....

3

..... [3]

[Total: 11]

Turn over

18

7 Lipoproteins contain protein, cholesterol, triglycerides and phospholipids. They are involved in the transport of cholesterol in the blood.

(a) The protein molecules in a lipoprotein are made up of amino acids. One of these amino acids is alanine.

The R group in alanine is CH_3 .

Describe the structure of the amino acid alanine.

.....
.....
..... [4]

(b) (i) Explain why a diet high in saturated fat leads to an increase in blood cholesterol.

.....
.....
.....
.....
..... [2]

8 A teacher was reviewing some common mistakes in a variety of students' answers to biological questions.

Some of the answers given by the students are written below.

(a) "When investigating the effect of temperature on enzyme activity it is important to keep the amount of substrate the same."

Suggest a more suitable word than 'amount'.

..... [1]

(b) "Productivity of domestic animals can be improved by selective breeding. However, inbreeding can be a problem as it causes mutations which can lead to genetic diseases in the animals."

State and explain the incorrect biology in this answer.

.....
.....
.....
..... [2]

(c) "The Simpson's Index of Diversity for the area of woodland is very high. This means that the habitat is stable and so the electricity company's application to build a power station is likely to be approved after the Environmental Impact Assessment has been carried out."

Explain the incorrect biology in this answer.

.....
.....
.....
..... [2]

(d) In response to the question “Explain why some types of food are stored in a freezer”, a student wrote:

“Food does not decay when frozen because the very low temperature denatures the bacterial enzymes so the enzymes cannot bind to the substrate molecules in the food.”

Suggest a better answer to the question.

.....

.....

.....

.....

.....

.....

.....

..... [3]

[Total: 8]

END OF QUESTION PAPER

ADDITIONAL ANSWER SPACE

If additional answer space is required, you should use the following lined page(s). The question number(s) must be clearly shown in the margin(s).

A large area of lined paper for writing answers. It features a vertical margin line on the left side and horizontal dotted lines for writing. The lines are evenly spaced and extend across the width of the page.

A large area of the page is reserved for writing, featuring a vertical solid line on the left side and horizontal dotted lines extending across the page.



Copyright Information

OCR is committed to seeking permission to reproduce all third-party content that it uses in its assessment materials. OCR has attempted to identify and contact all copyright holders whose work is used in this paper. To avoid the issue of disclosure of answer-related information to candidates, all copyright acknowledgements are reproduced in the OCR Copyright Acknowledgements Booklet. This is produced for each series of examinations and is freely available to download from our public website (www.ocr.org.uk) after the live examination series.

If OCR has unwittingly failed to correctly acknowledge or clear any third-party content in this assessment material, OCR will be happy to correct its mistake at the earliest possible opportunity.

For queries or further information please contact the Copyright Team, First Floor, 9 Hills Road, Cambridge CB2 1GE.

OCR is part of the Cambridge Assessment Group; Cambridge Assessment is the brand name of University of Cambridge Local Examinations Syndicate (UCLES), which is itself a department of the University of Cambridge.